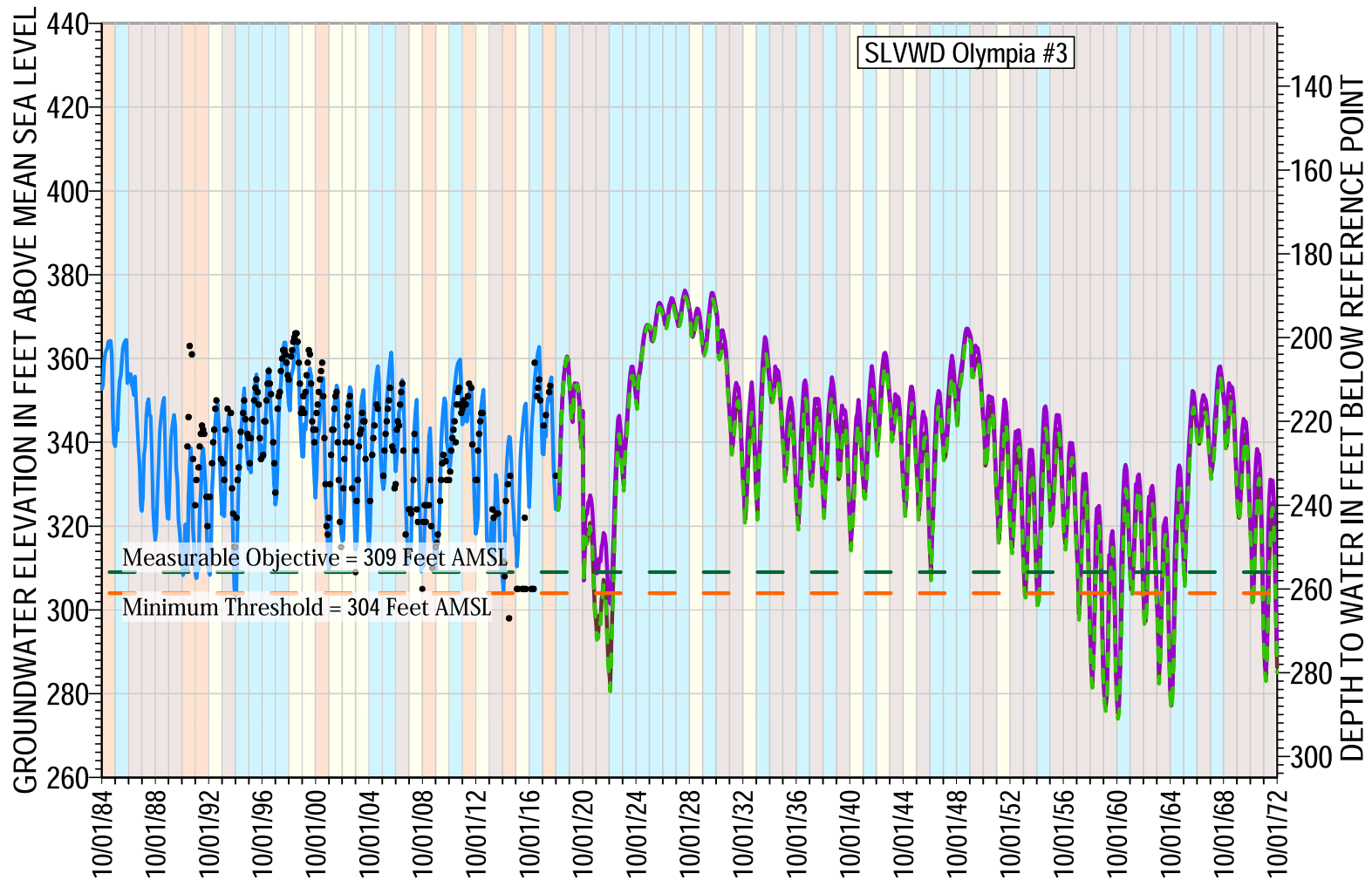


## **Section 3. Sustainable Management Criteria**

### **Santa Margarita Basin Groundwater Sustainability Plan**

#### **Appendix 3A Representative Monitoring Point Hydrographs with Sustainable Management Criteria**

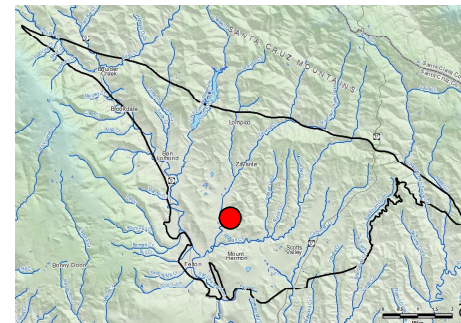


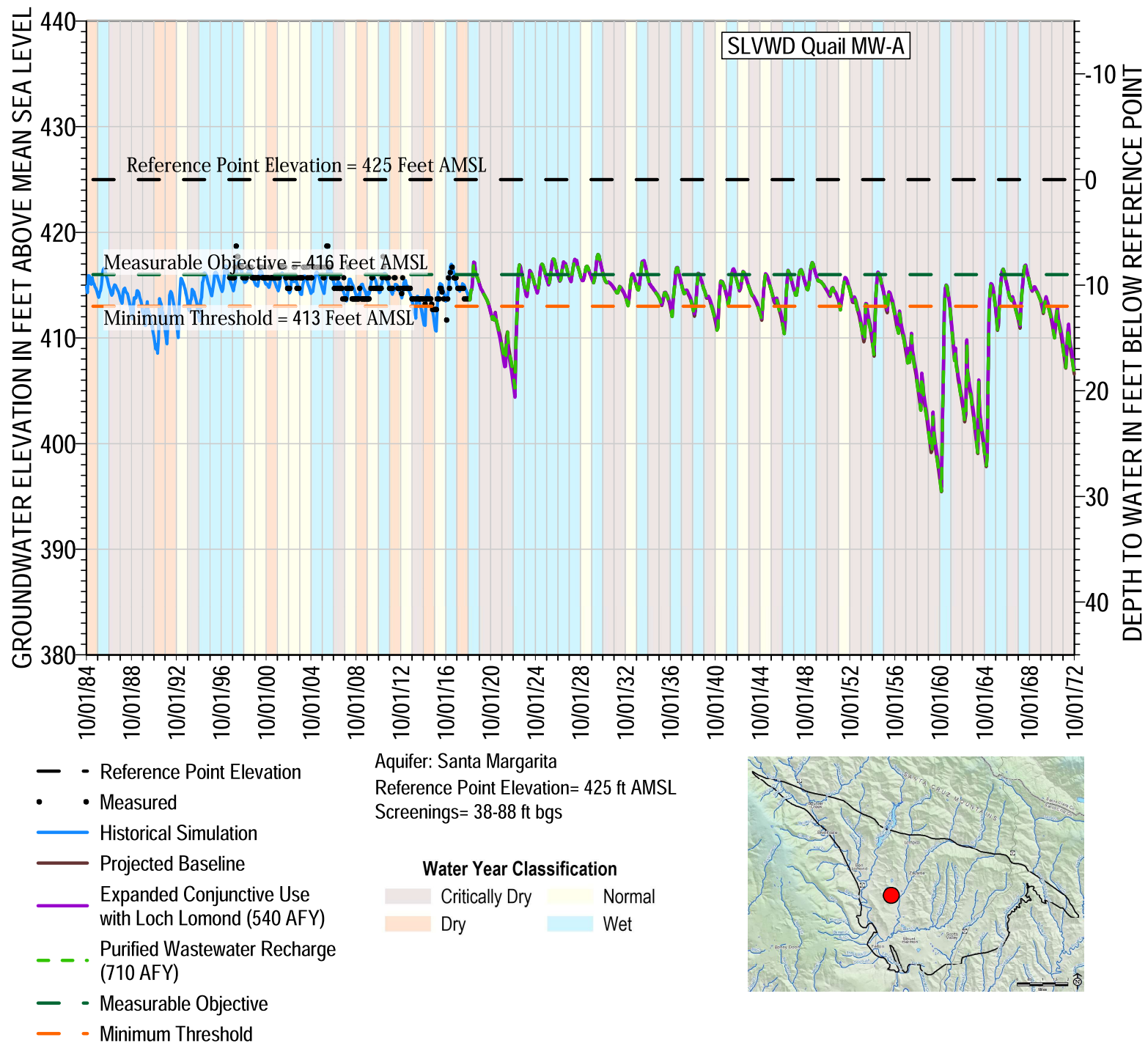
- Measured
- Historical Simulation
- Projected Baseline
- Expanded Conjunctive Use with Loch Lomond (540 AFY)
- Purified Wastewater Recharge (710 AFY)
- Measurable Objective
- Minimum Threshold

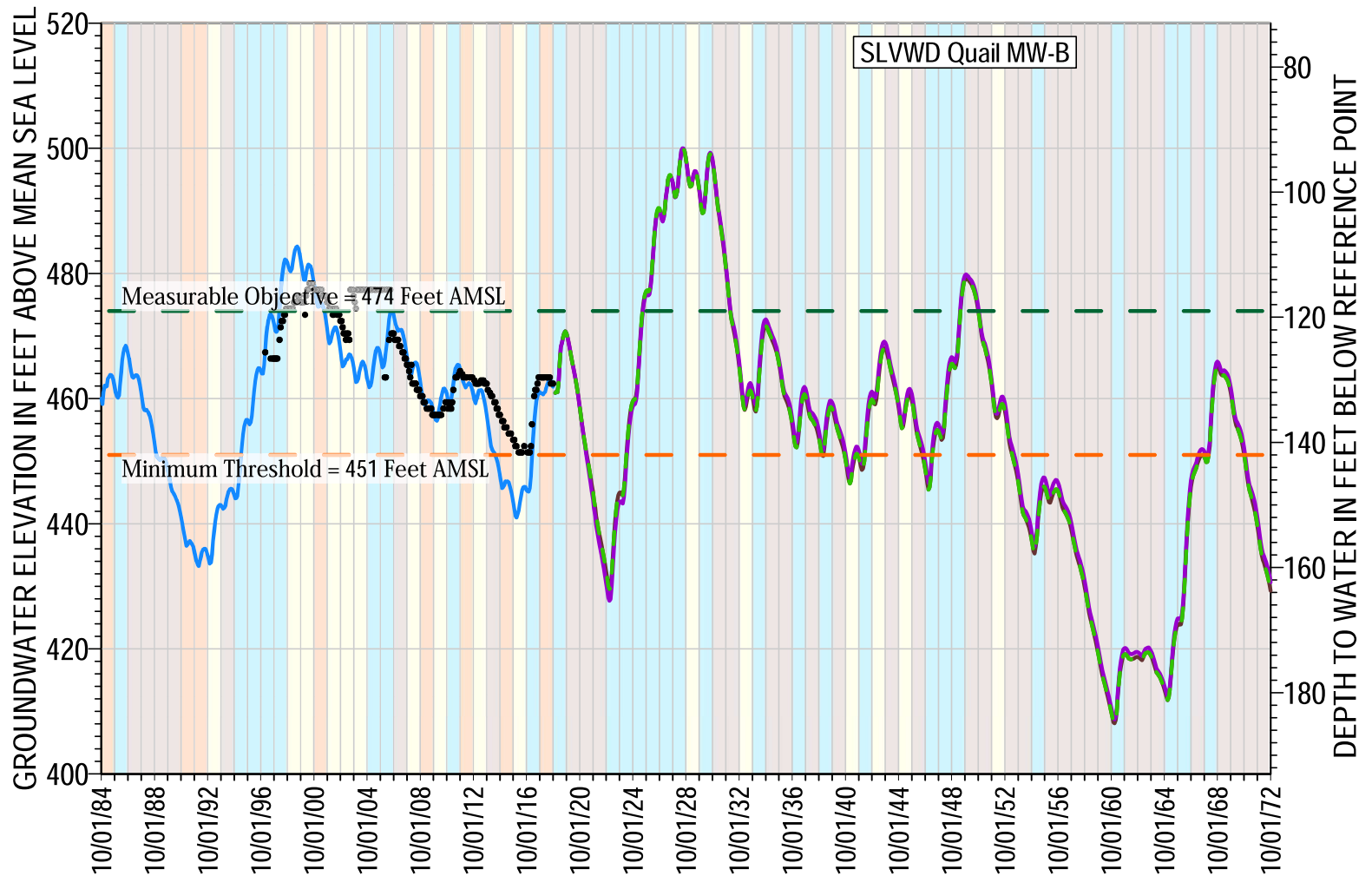
Aquifer: Santa Margarita  
Reference Point Elevation= 565 ft AMSL  
Screenings= 230-308 ft bgs

**Water Year Classification**

- Critically Dry
- Dry
- Normal
- Wet





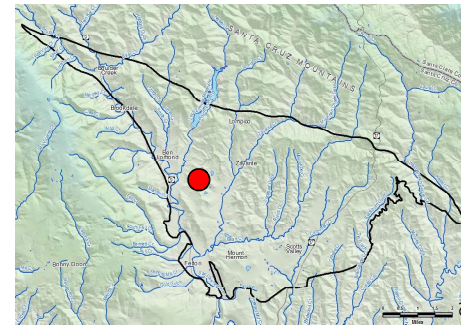


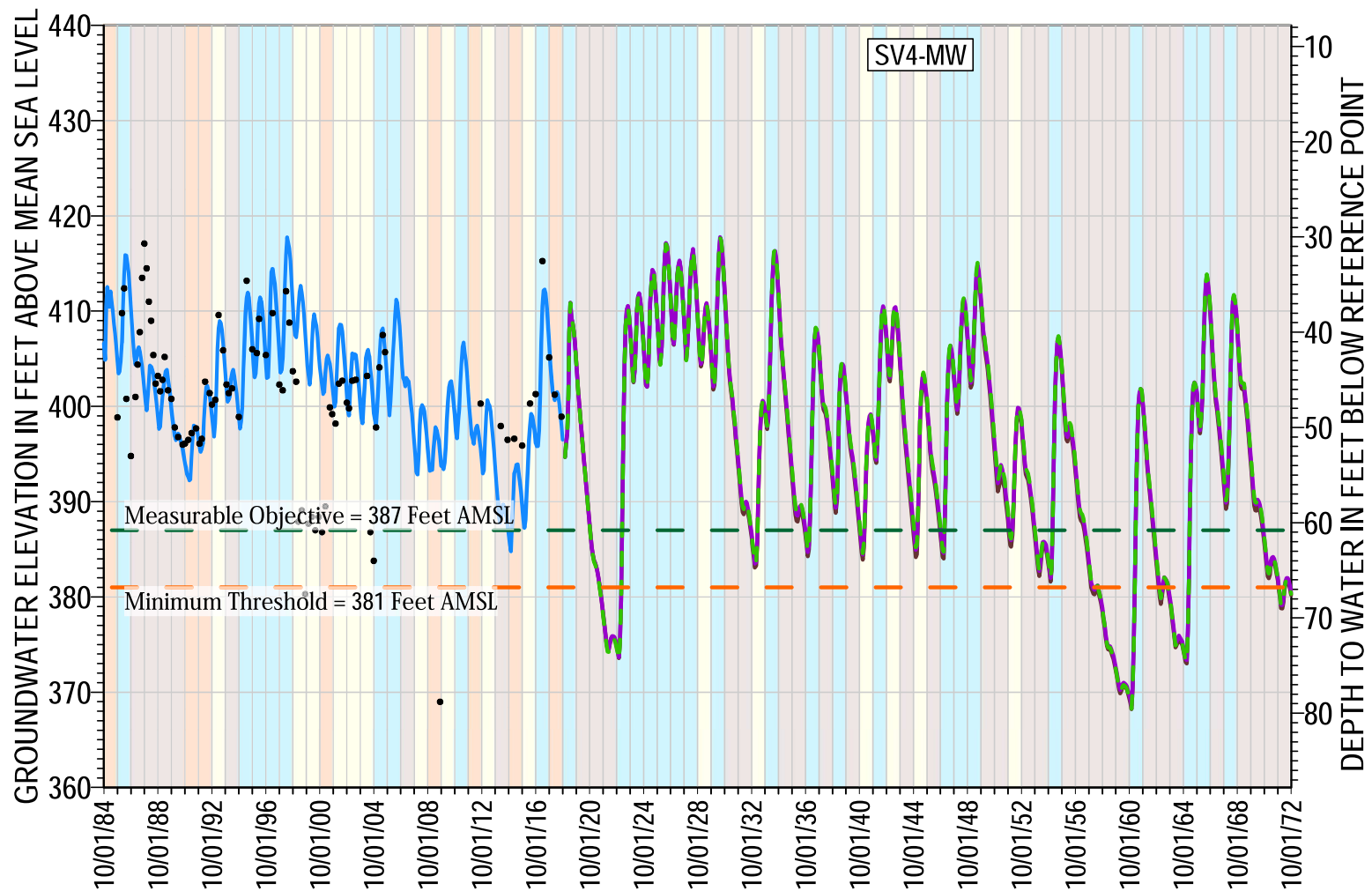
- Measured
- Historical Simulation
- Projected Baseline
- Expanded Conjunctive Use with Loch Lomond (540 AFY)
- Purified Wastewater Recharge (710 AFY)
- Measurable Objective
- Minimum Threshold

Aquifer: Santa Margarita  
 Reference Point Elevation= 593 ft AMSL  
 Screenings= 95-195 ft bgs

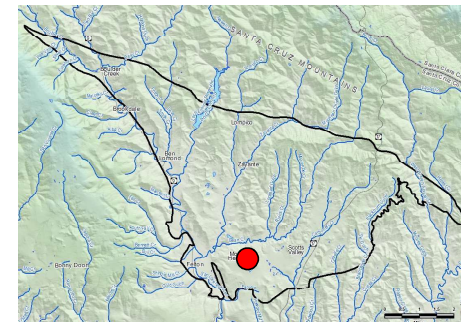
#### Water Year Classification

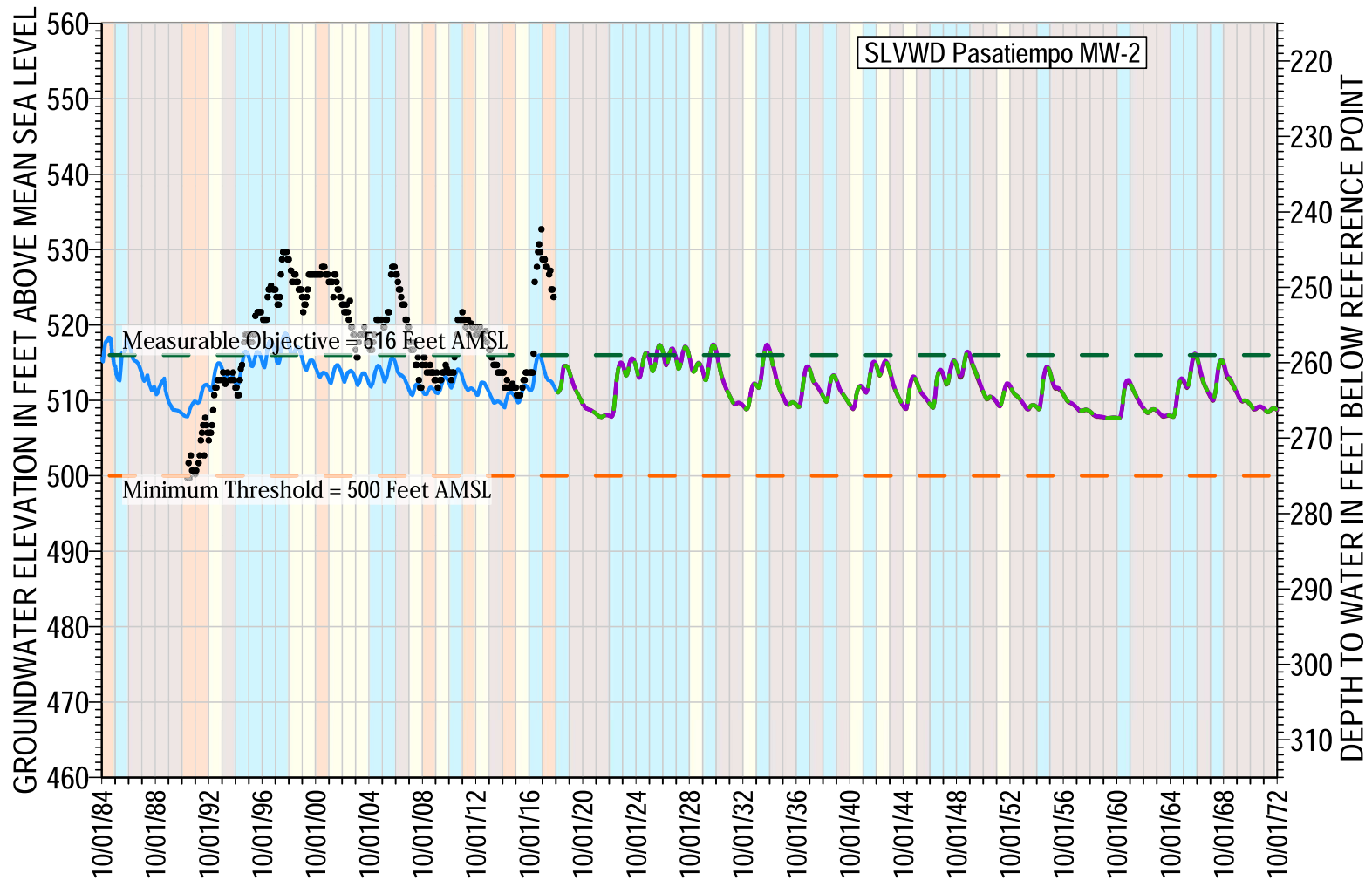
- Critically Dry
- Dry
- Normal
- Wet





Aquifer: Santa Margarita  
Reference Point Elevation= 447.79 ft AMSL  
Screenings= 50-60 ft bgs



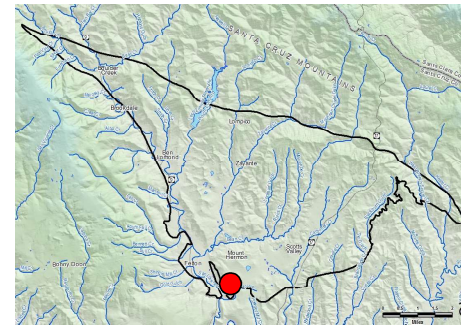


- Measured
- Historical Simulation
- Projected Baseline
- Expanded Conjunctive Use with Loch Lomond (540 AFY)
- Purified Wastewater Recharge (710 AFY)
- Measurable Objective
- Minimum Threshold

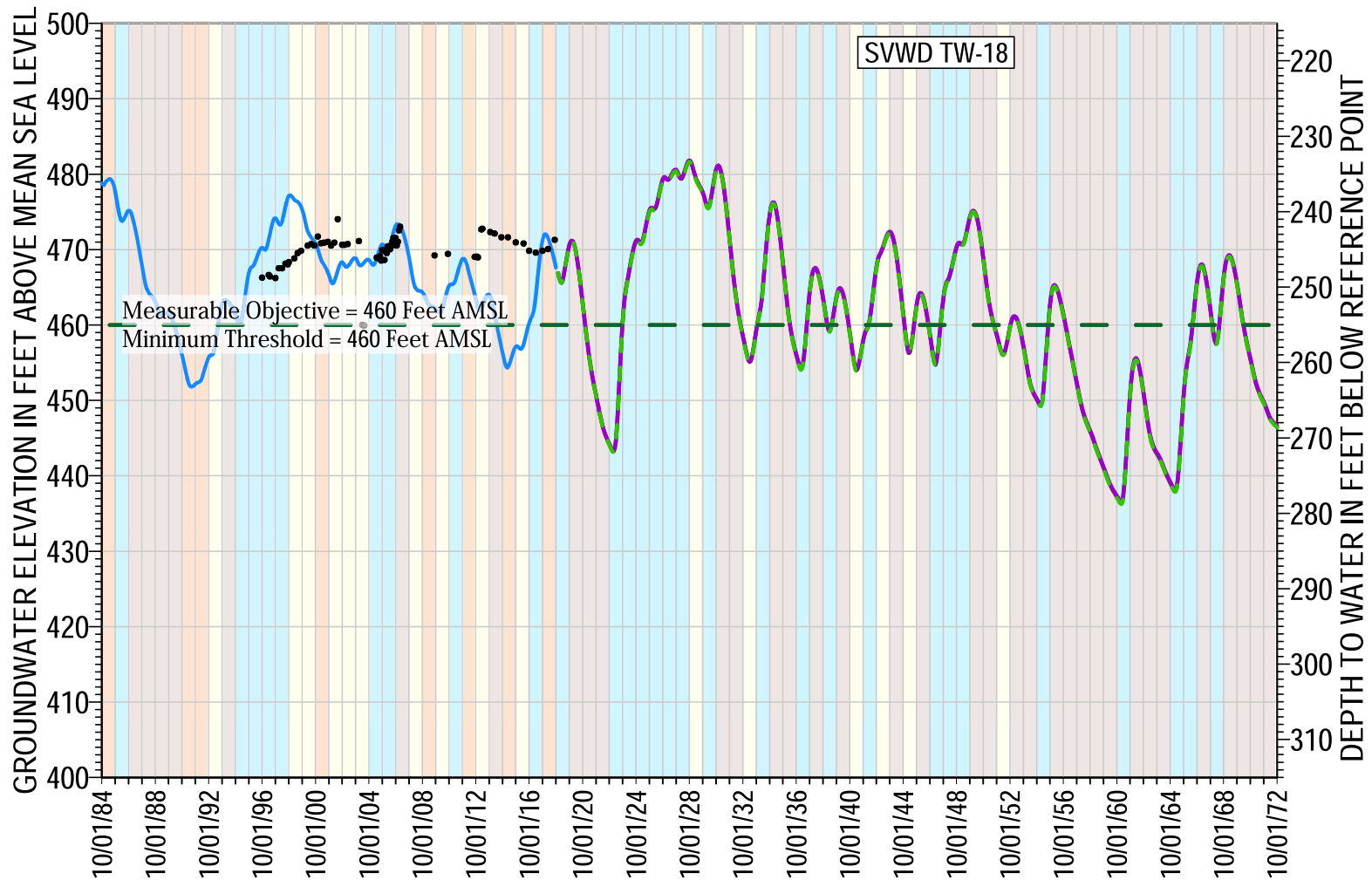
Aquifer: Santa Margarita  
 Reference Point Elevation= 775 ft AMSL  
 Screenings= 280-340 ft bgs

**Water Year Classification**

- Critically Dry
- Dry
- Normal
- Wet





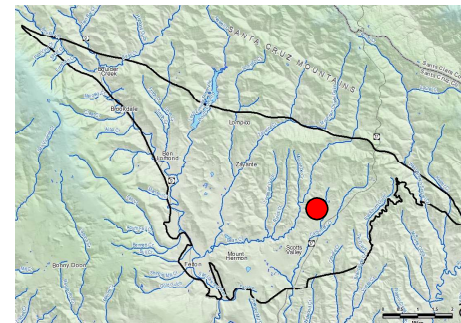


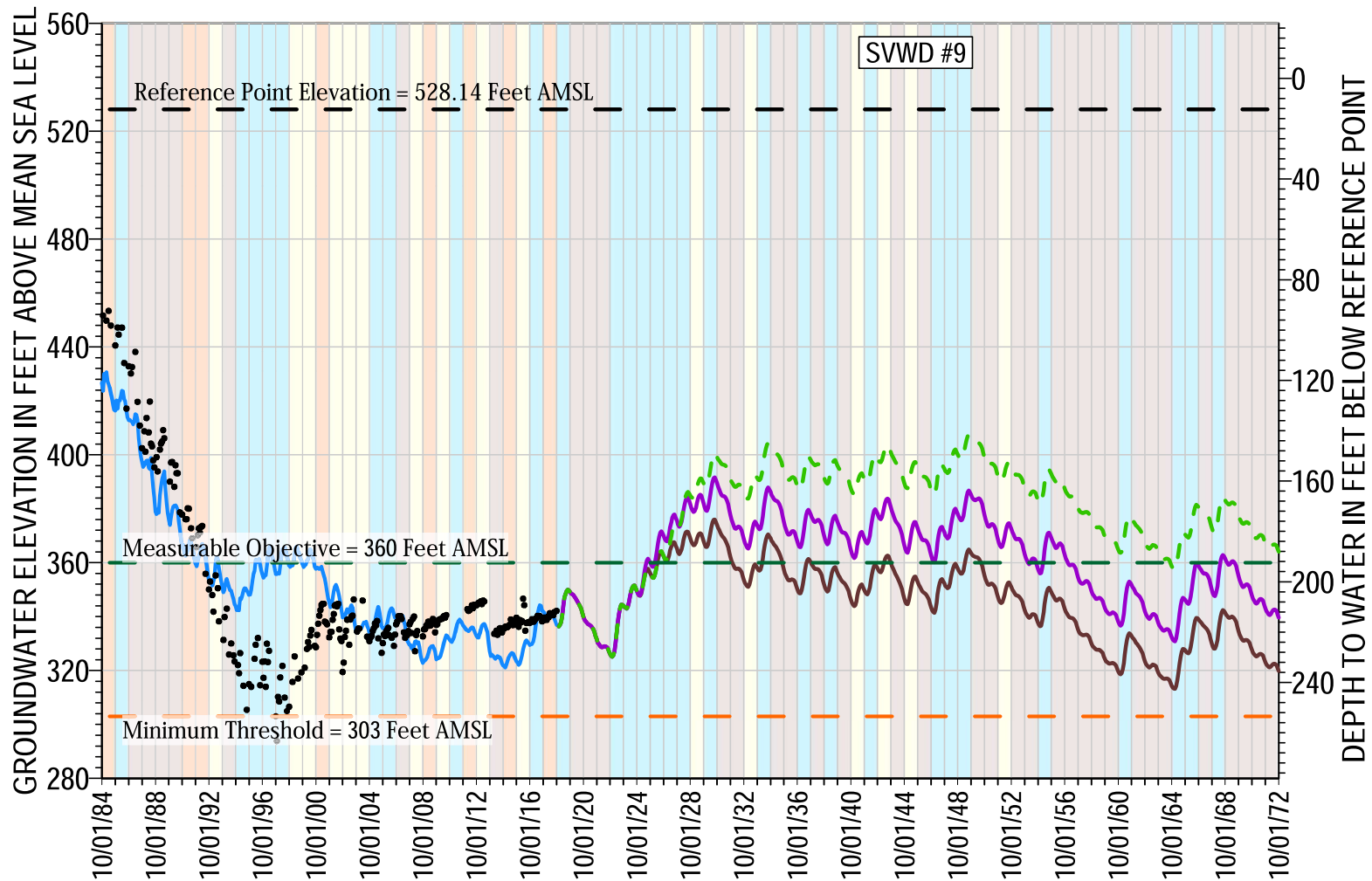
- Measured
- Historical Simulation
- Projected Baseline
- Expanded Conjunctive Use with Loch Lomond (540 AFY)
- Purified Wastewater Recharge (710 AFY)
- Measurable Objective
- Minimum Threshold

Aquifer: Santa Margarita  
Reference Point Elevation= 715.03 ft AMSL  
Screenings= 285-345 ft bgs

#### Water Year Classification

- Critically Dry
- Dry
- Normal
- Wet



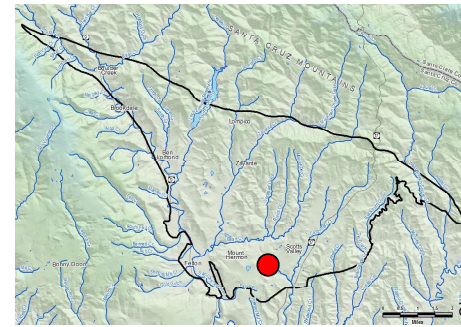


- Reference Point Elevation
- Measured
- Historical Simulation
- Projected Baseline
- Expanded Conjunctive Use with Loch Lomond (540 AFY)
- Purified Wastewater Recharge (710 AFY)
- Measurable Objective
- Minimum Threshold

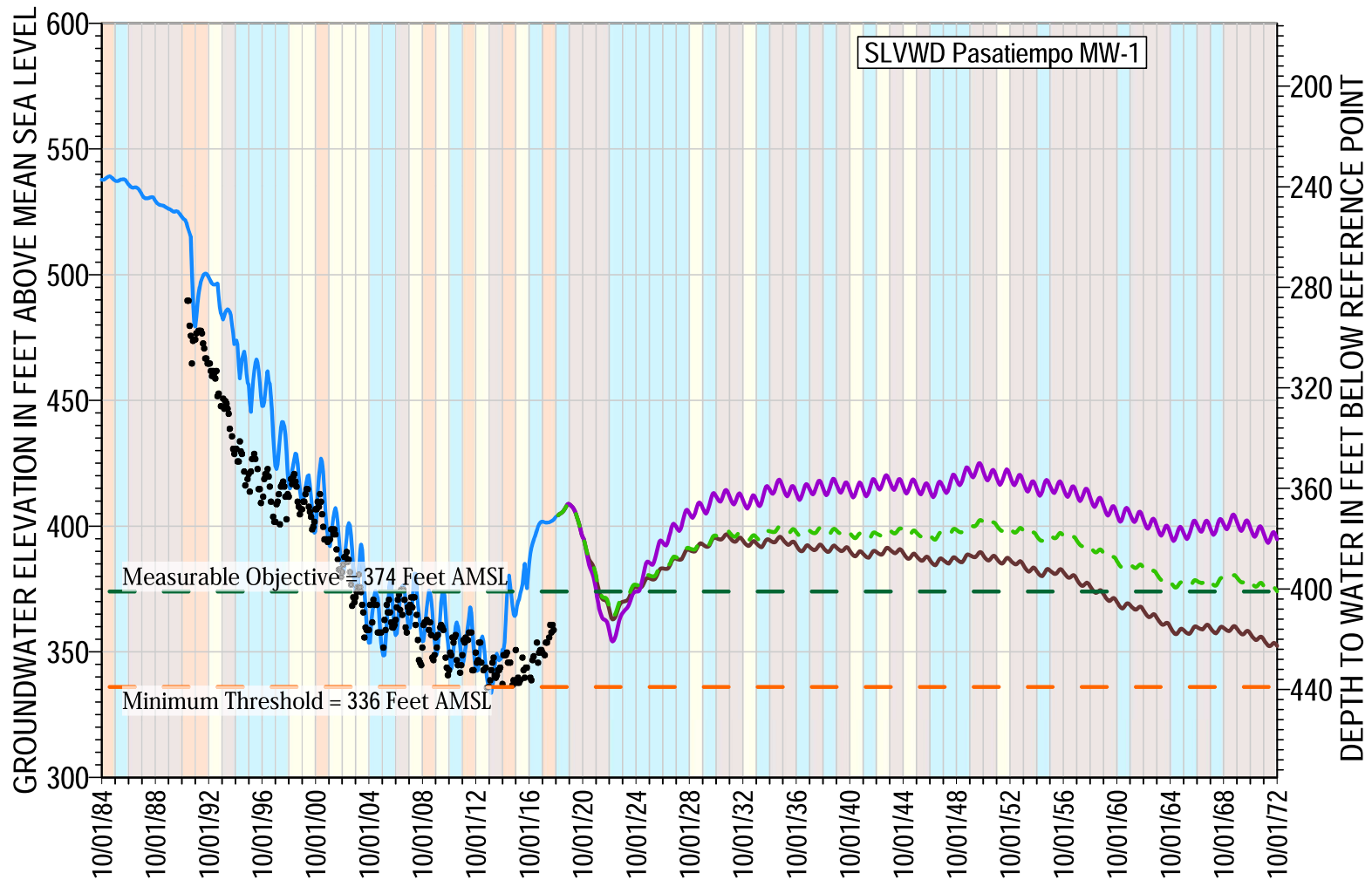
Aquifer: Monterey  
 Reference Point Elevation= 528.14 ft AMSL  
 Screenings= ft bgs

#### Water Year Classification

- Critically Dry
- Dry
- Normal
- Wet





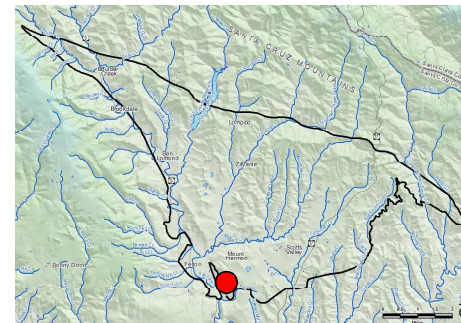


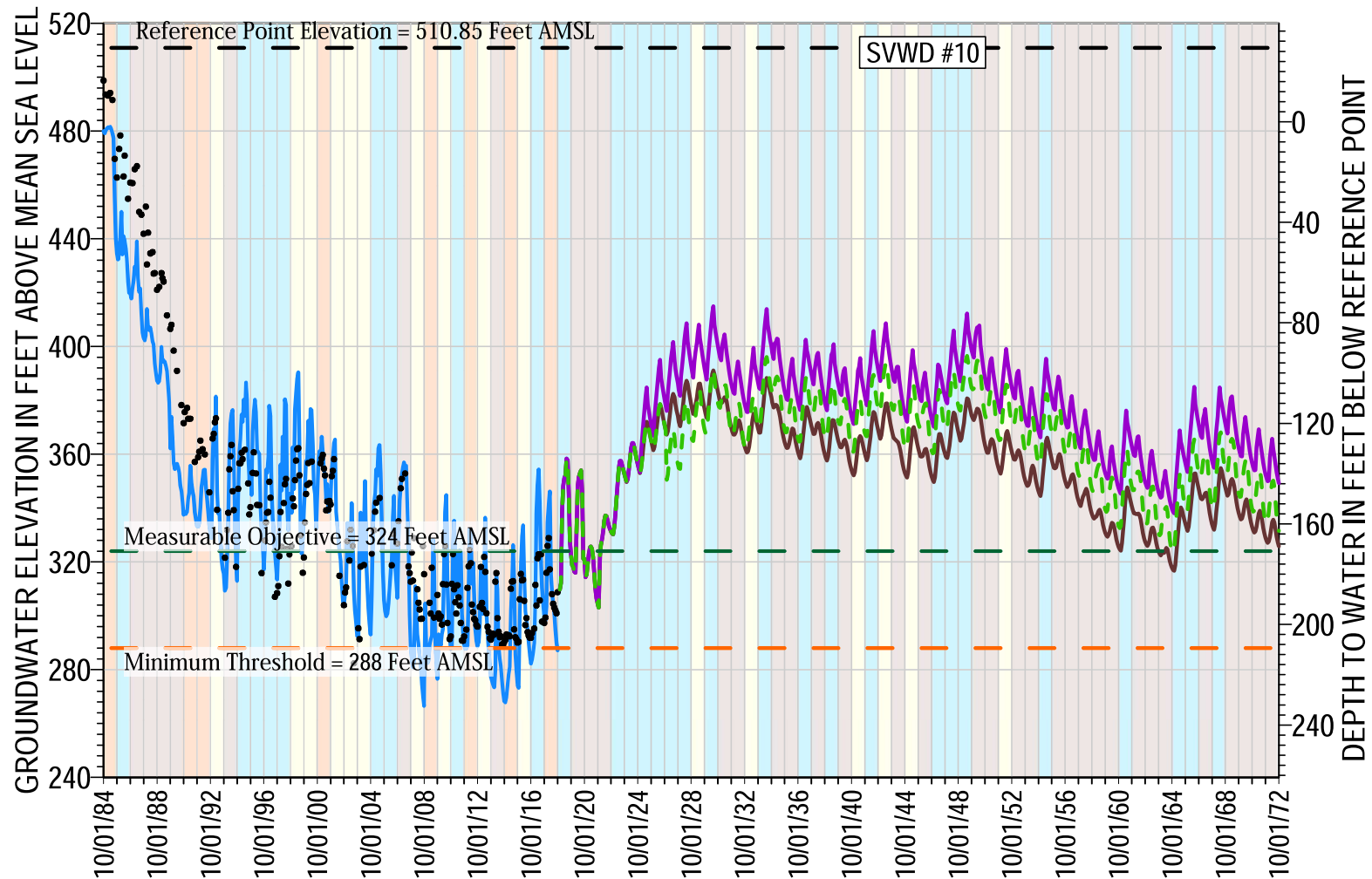
- Measured
- Historical Simulation
- Projected Baseline
- Expanded Conjunctive Use with Loch Lomond (540 AFY)
- - Purified Wastewater Recharge (710 AFY)
- - Measurable Objective
- - Minimum Threshold

Aquifer: Lompico  
 Reference Point Elevation= 775 ft AMSL  
 Screenings= 600-660 ft bgs

**Water Year Classification**

- |                  |          |
|------------------|----------|
| — Critically Dry | — Normal |
| — Dry            | — Wet    |





— Reference Point Elevation

• Measured

— Historical Simulation

— Projected Baseline

— Expanded Conjunctive Use  
with Loch Lomond (540 AFY)

— Purified Wastewater Recharge  
(710 AFY)

— Measurable Objective

— Minimum Threshold

Aquifer: Santa Margarita, Lompico

Reference Point Elevation = 510.85 ft AMSL

Screenings = 190-220, 240-270, 325-355 ft bgs

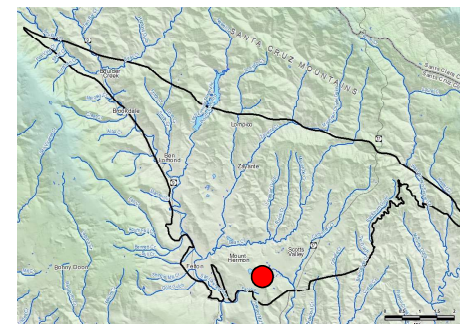
#### Water Year Classification

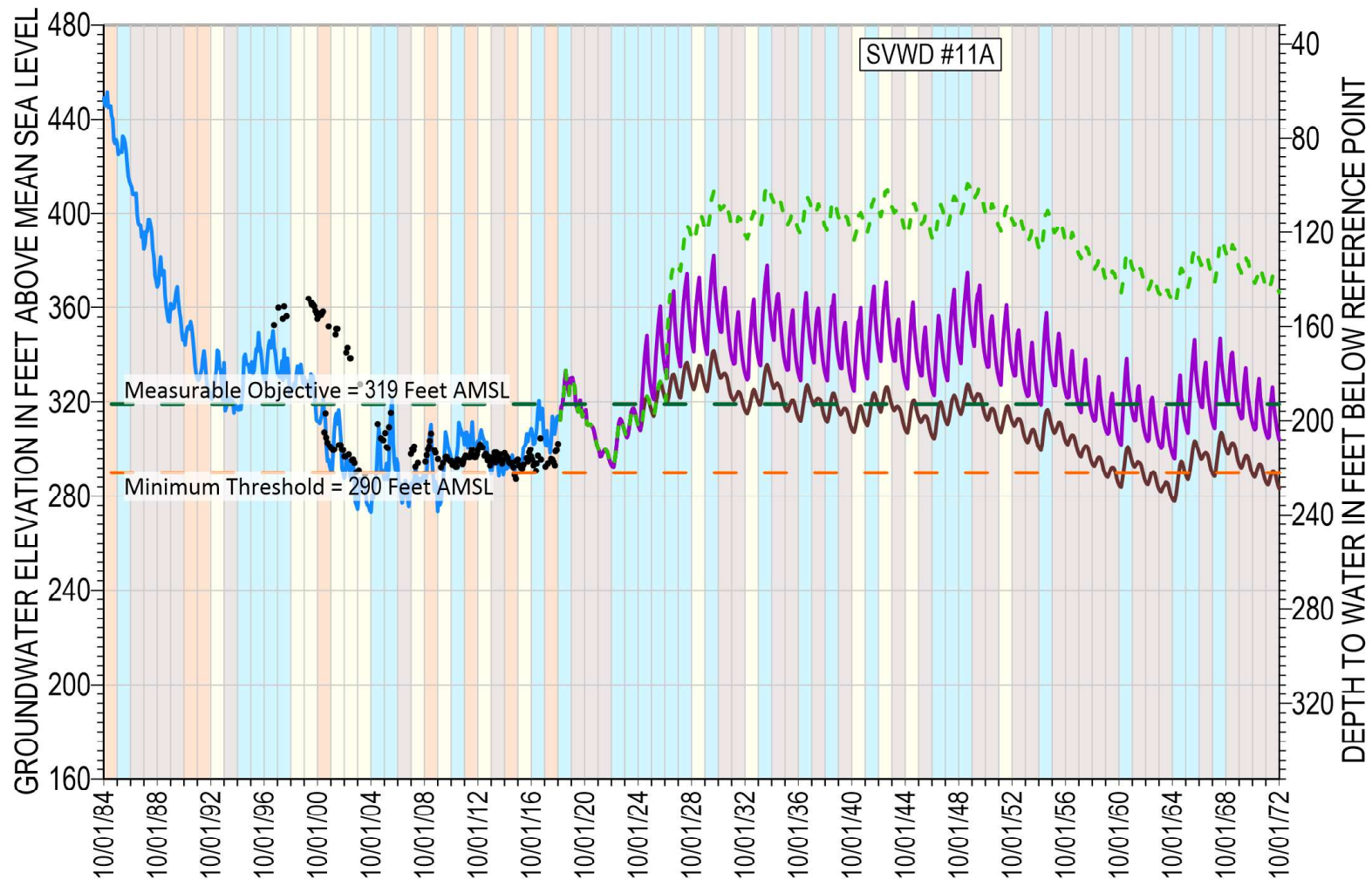
— Critically Dry

— Dry

— Normal

— Wet



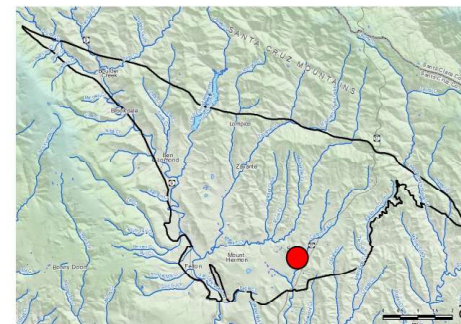


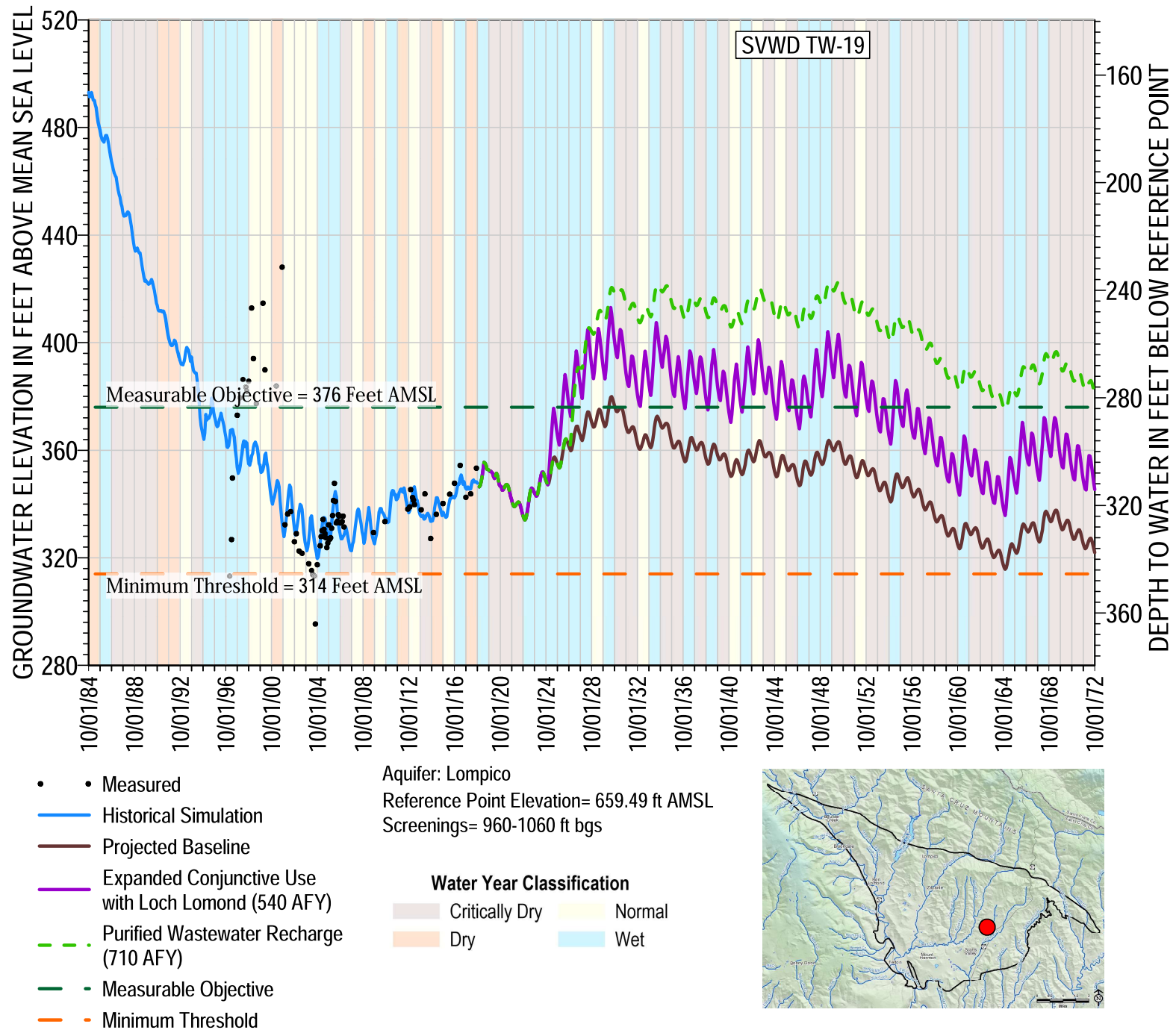
- Measured
- Historical Simulation
- Projected Baseline
- Expanded Conjunctive Use with Loch Lomond (540 AFY)
- - Purified Wastewater Recharge (710 AFY)
- - Measurable Objective
- - Minimum Threshold

Aquifer: Lompico  
 Reference Point Elevation= 512 ft AMSL  
 Screenings= 282-382, 403-453 ft bgs

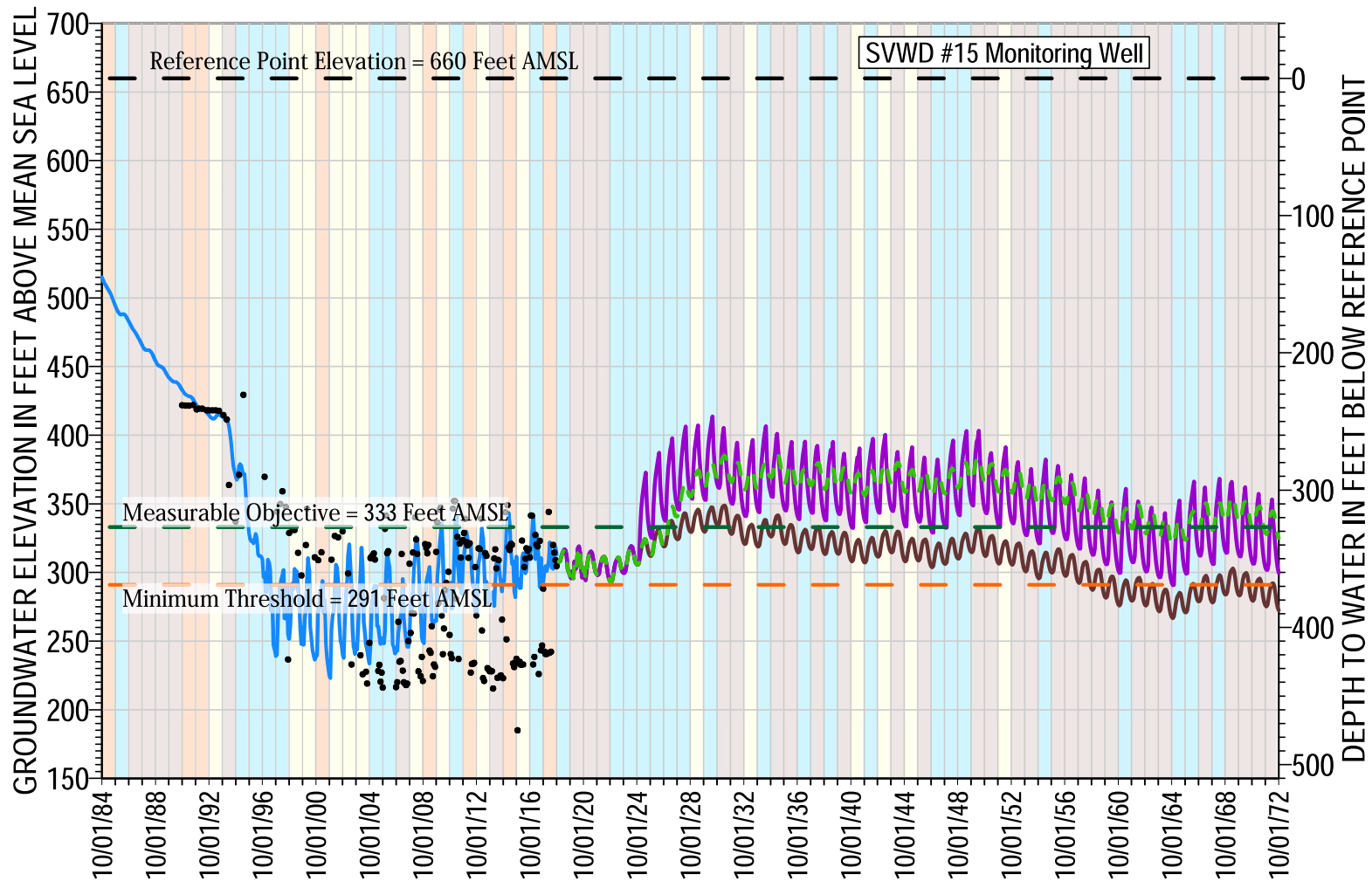
#### Water Year Classification

- Critically Dry
- Dry
- Normal
- Wet







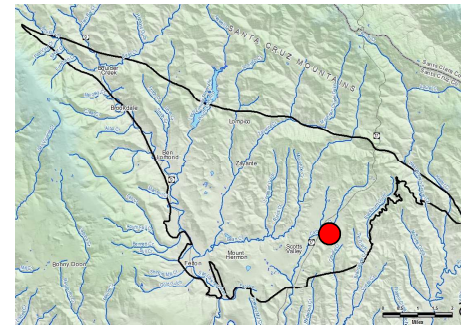


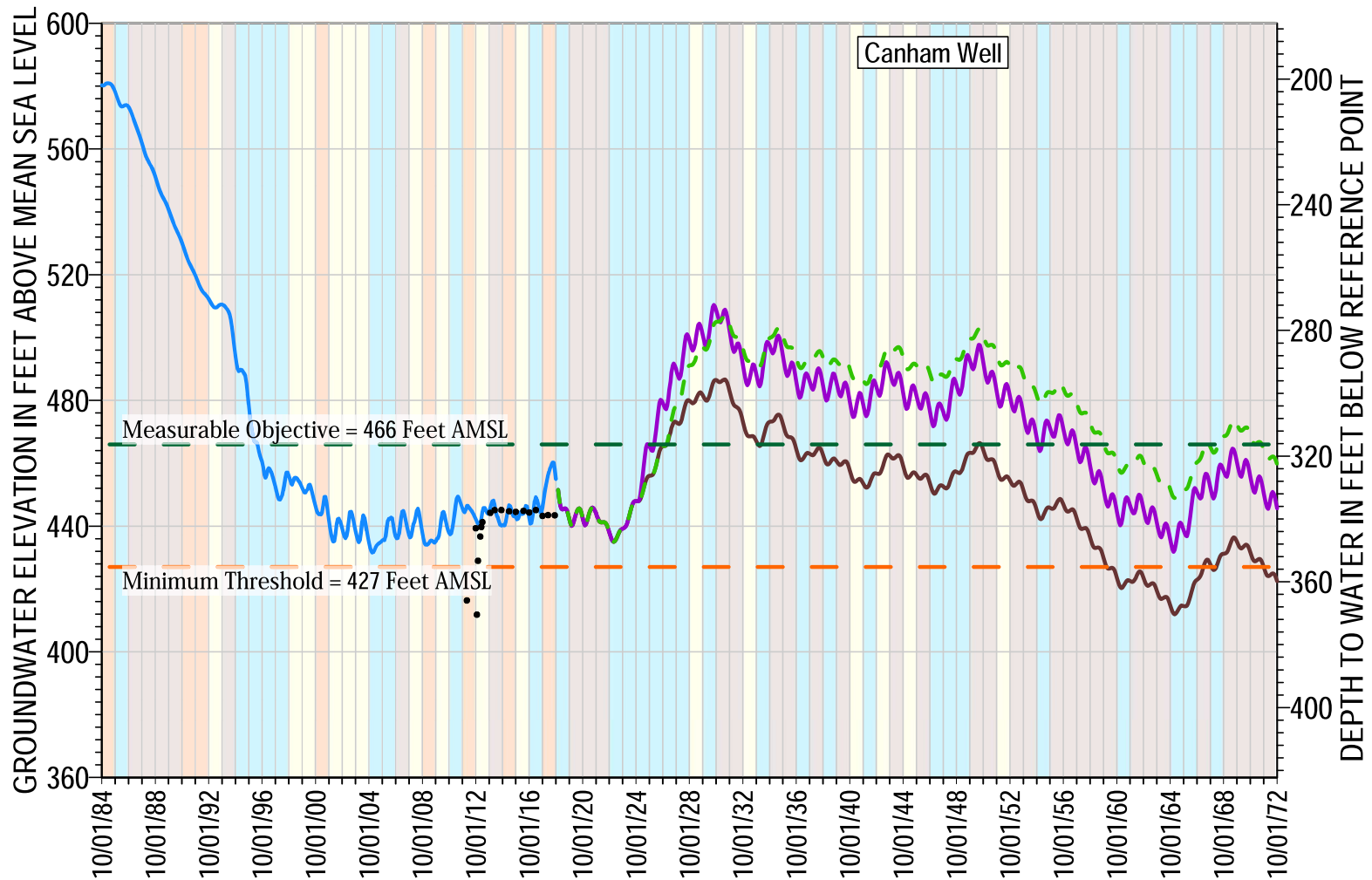
- Reference Point Elevation
- Measured
- Historical Simulation
- Projected Baseline
- Expanded Conjunctive Use with Loch Lomond (540 AFY)
- Purified Wastewater Recharge (710 AFY)
- Measurable Objective
- Minimum Threshold

Aquifer: Butano  
Reference Point Elevation= 660 ft AMSL  
Screenings= 700-1100 ft bgs

#### Water Year Classification

- Critically Dry
- Dry
- Normal
- Wet



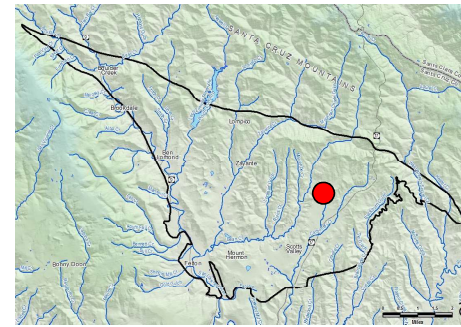


- Measured
- Historical Simulation
- Projected Baseline
- Expanded Conjunctive Use with Loch Lomond (540 AFY)
- Purified Wastewater Recharge (710 AFY)
- Measurable Objective
- Minimum Threshold

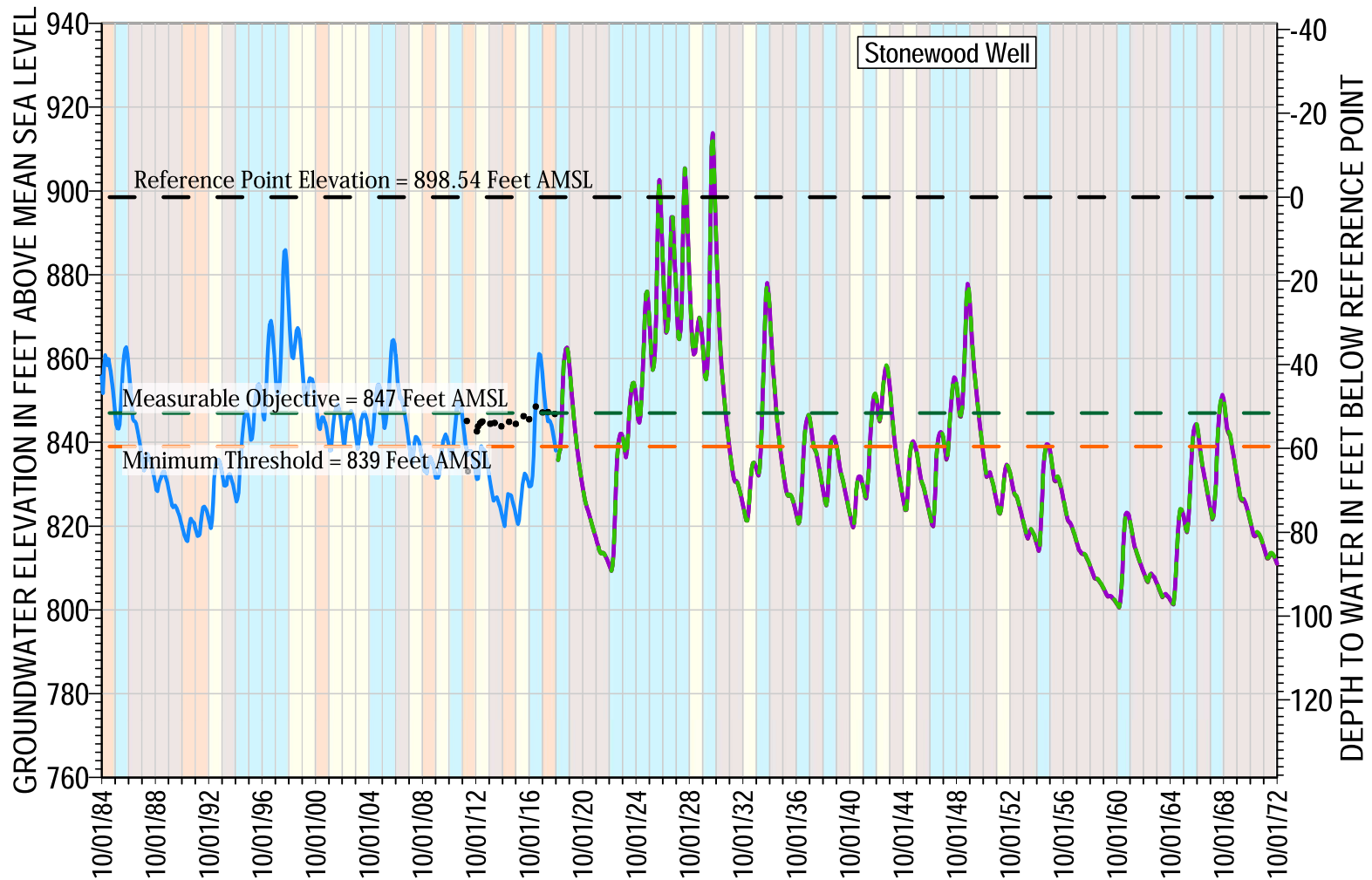
Aquifer: Butano  
Reference Point Elevation= 782.27 ft AMSL  
Screenings= Unknown ft bgs

#### Water Year Classification

- Critically Dry
- Dry
- Normal
- Wet







- Reference Point Elevation
- Measured
- Historical Simulation
- Projected Baseline
- Expanded Conjunctive Use with Loch Lomond (540 AFY)
- Purified Wastewater Recharge (710 AFY)
- Measurable Objective
- Minimum Threshold

Aquifer: Butano  
 Reference Point Elevation= 898.54 ft AMS  
 Screenings= 799-859 ft bgs

#### Water Year Classification

- Critically Dry
- Dry
- Normal
- Wet

