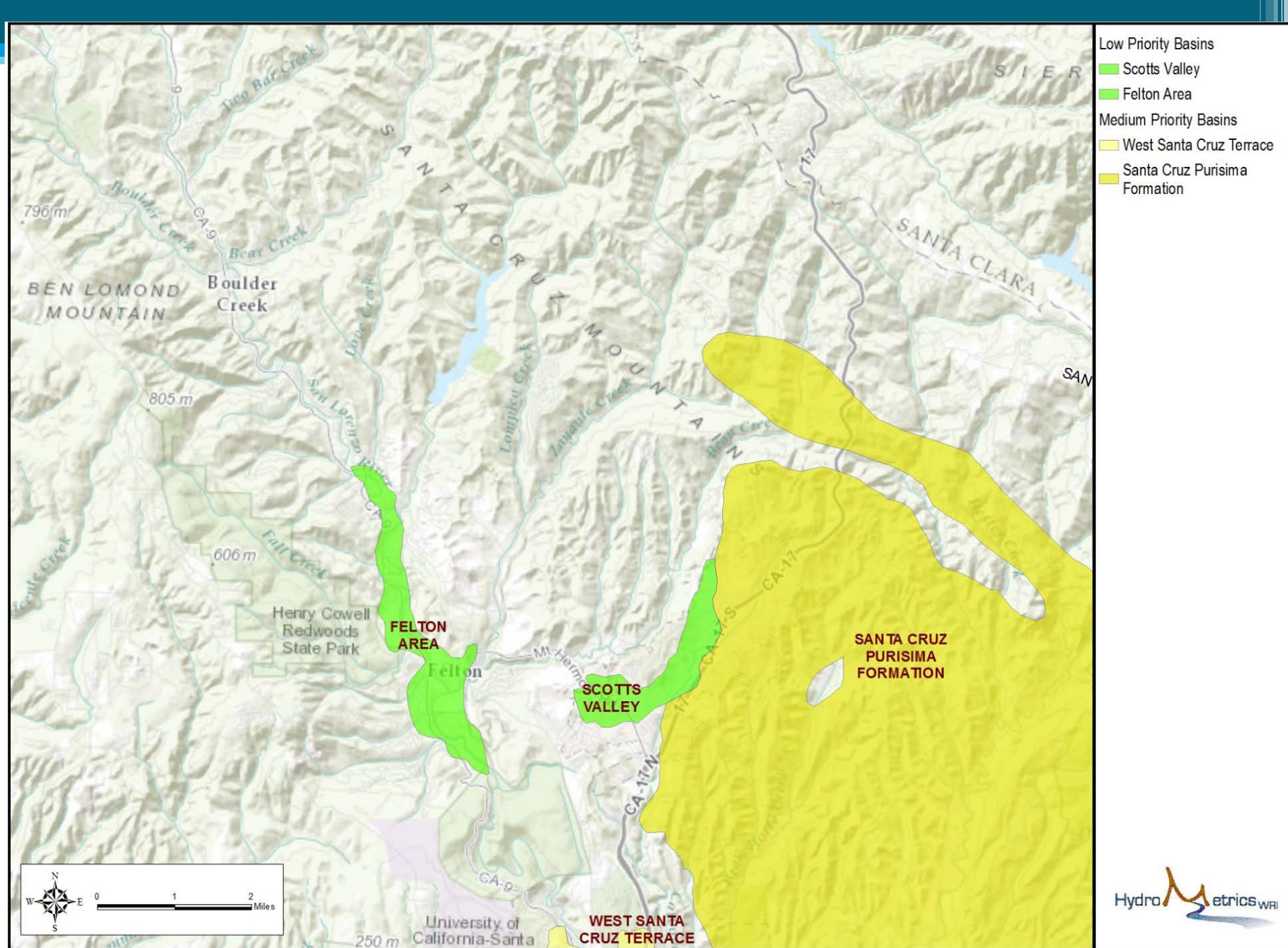
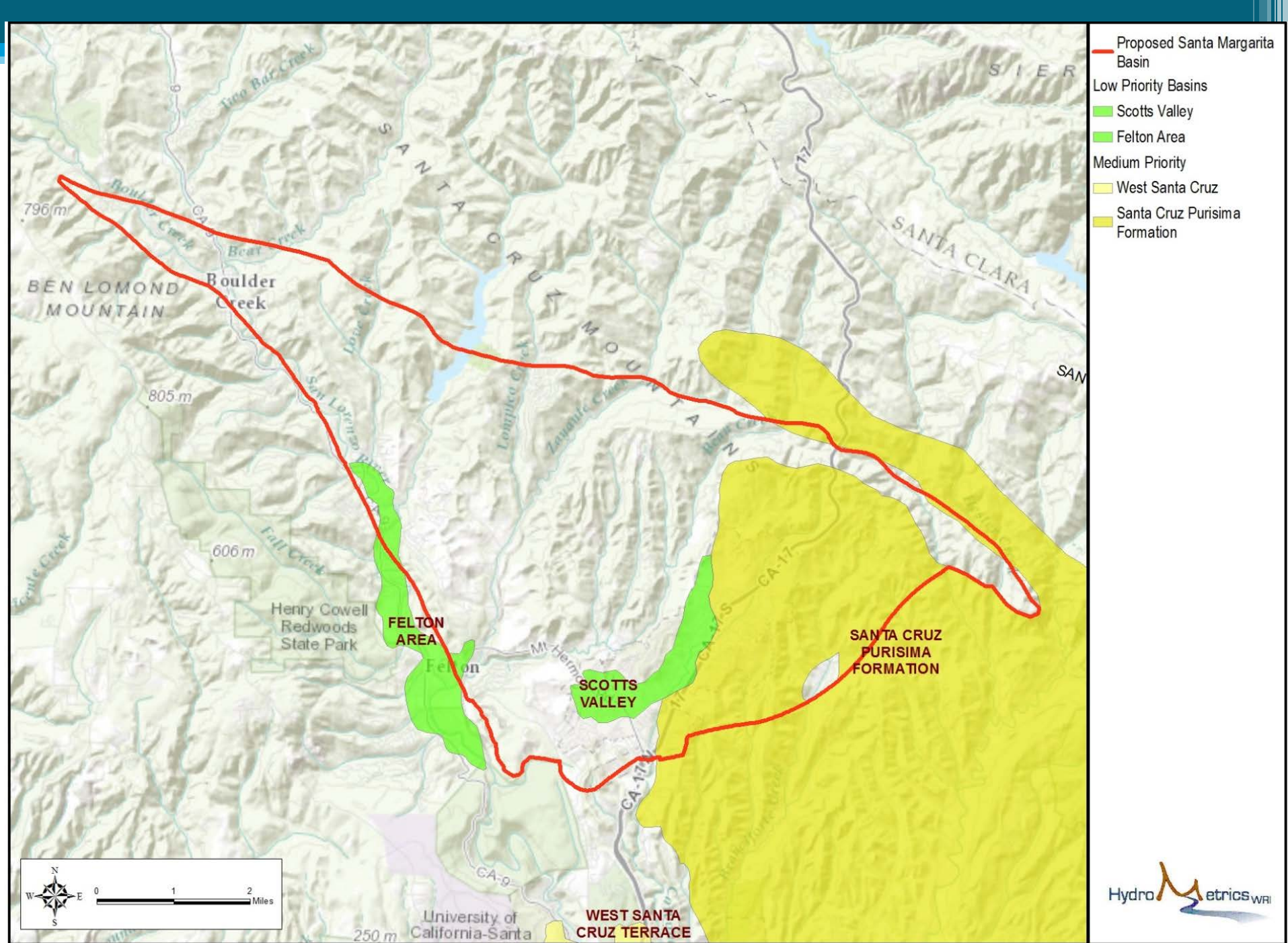
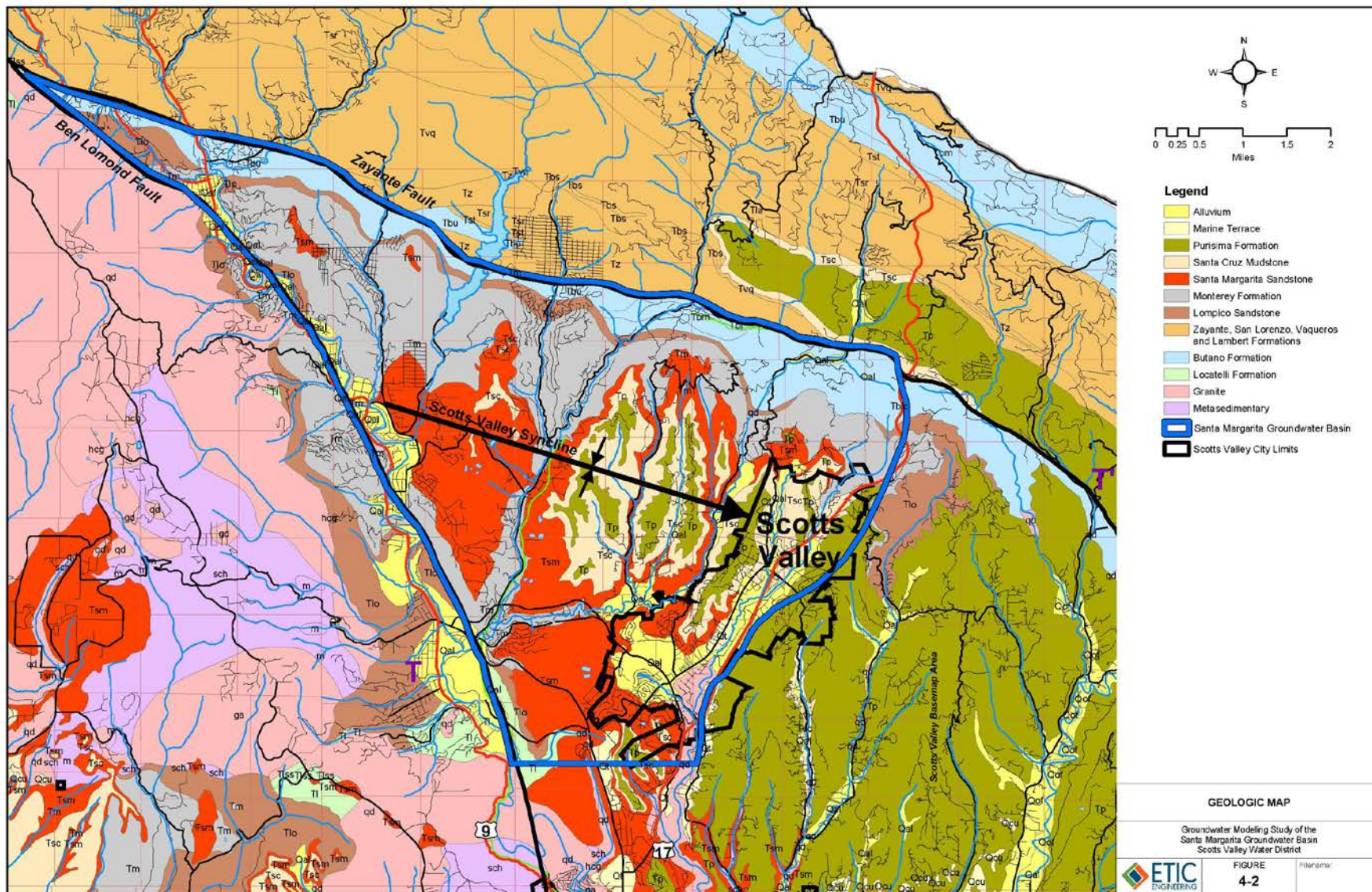


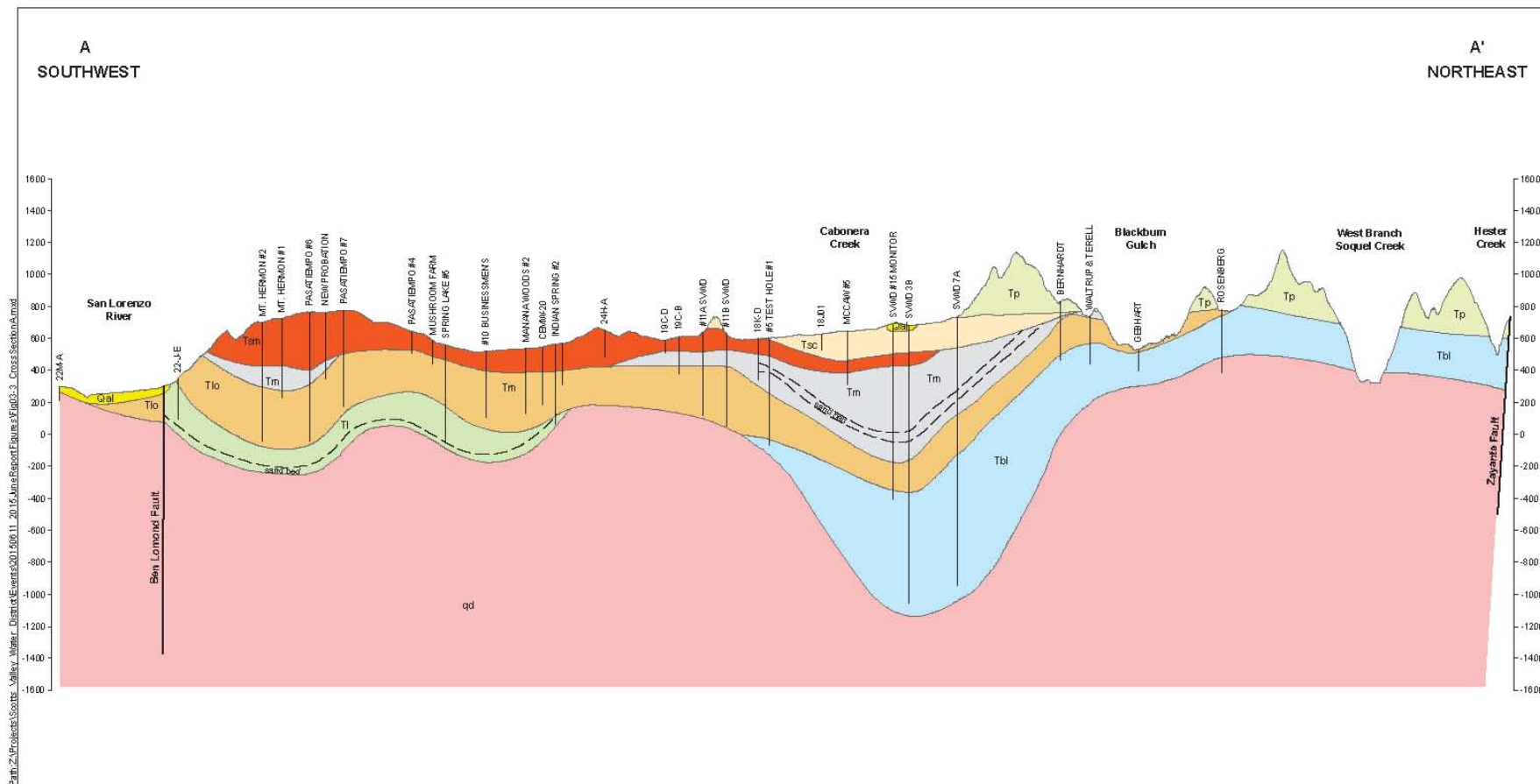
Proposed Santa Margarita Groundwater Basin Boundary Revision Approach

Meeting With CA Department of Water Resources
Sustainable Groundwater Management Act
Implementation
November 3, 2015







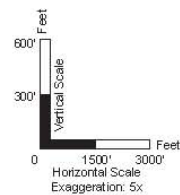


Geologic Unit

Qal	Alluvium	Tbu	Butano Formation - Upper Member
Tp	Purisima Formation	Tbm	Butano Formation - Middle Member
Tsc	Santa Cruz Mudstone	Tbl	Butano Formation - Lower Member
Tsm	Santa Margarita Sandstone	Tl	Locatelli Formation
Tm	Monterey Formation	qd	Crystalline Bedrock-Granite
Tlo	Lompoc Sandstone		

EXPLANATION

— S.W.M.D. 1
Well and Identifier



Kennedy/Jenks Consultants

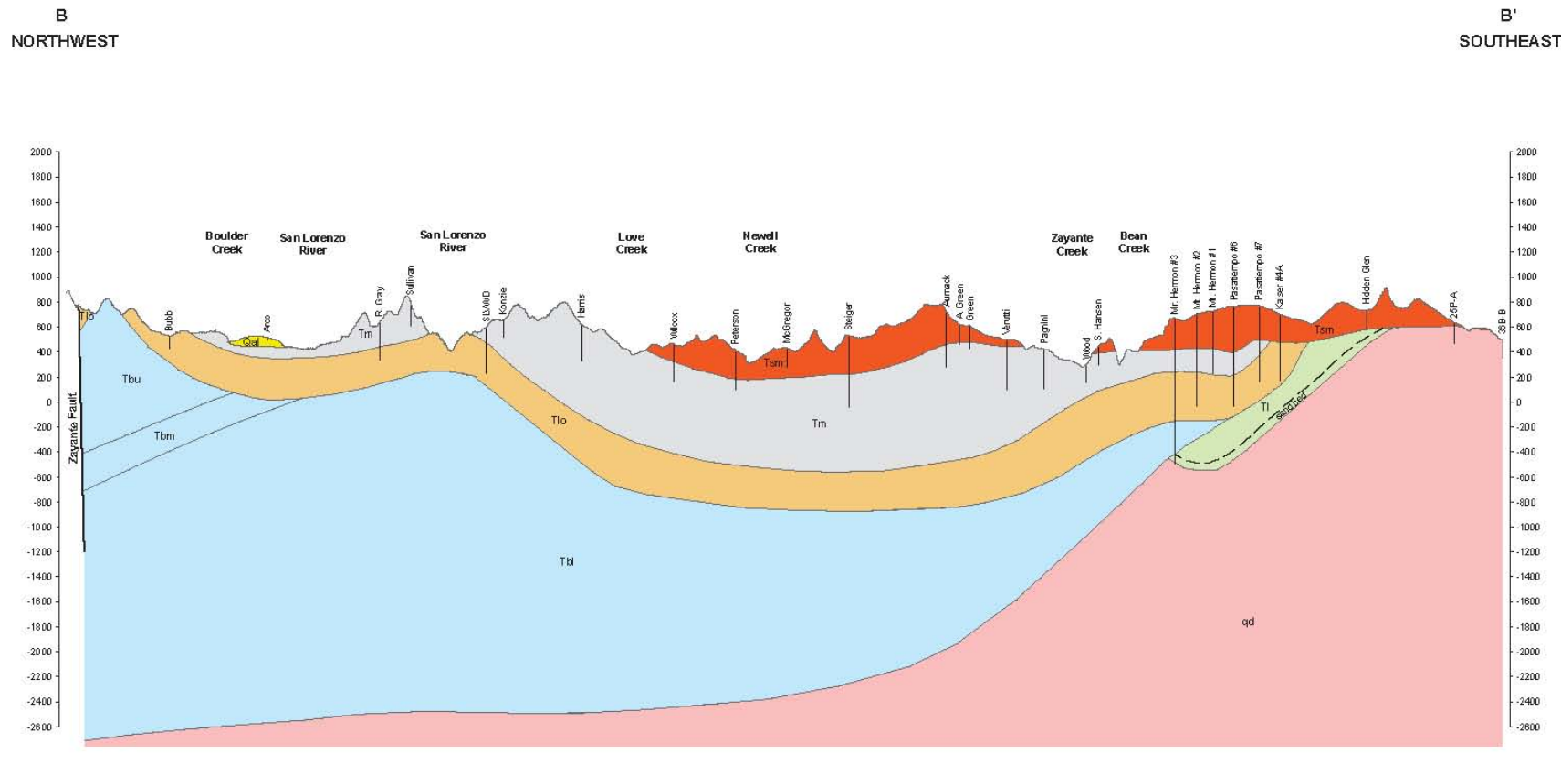
Santa Margarita Basin
Groundwater Modeling Technical Study
Scotts Valley Water District

Geologic Cross Section A-A'

K/J 1264001.00
June 2015

Figure 3-3

Path: Z:\Projects\Scotts Valley Water District\Figures\Fig3-4_CrossSectionB.mxd

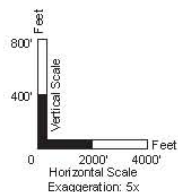


Note:

EXPLANATION

Geologic Unit	
Qal	Alluvium
TP	Purisima Formation
Tsc	Santa Cruz Mudstone
Tsm	Santa Margarita Sandstone
Tm	Monterey Formation
Tio	Lompoc Sandstone
Tbu	Butano Formation - Upper Member
Tbm	Butano Formation - Middle Member
Tbl	Butano Formation - Lower Member
TI	Locatelli Formation
qd	Crystalline Bedrock-Granite

Well and Identifier



Kennedy/Jenks Consultants
Santa Margarita Basin
Groundwater Modeling Technical Study
Scotts Valley Water District

Geologic Cross Section B-B'

KJ 1264001.00
June 2015

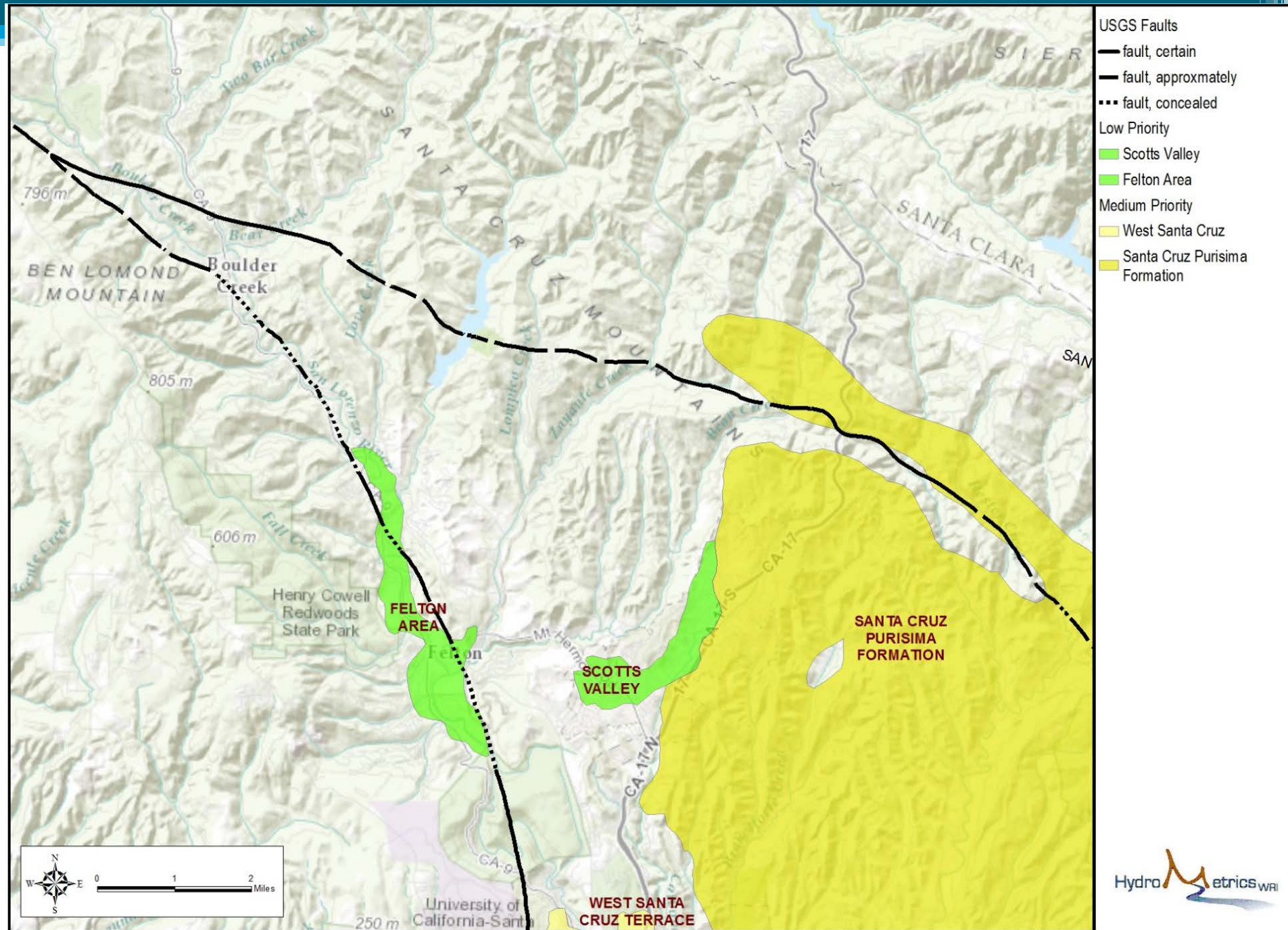
Figure 3-4

General Approach

- Define basin boundaries technically
 - Faults
 - Bedrock high
 - Edge of outcrops
- Modify basin boundaries for jurisdictional reasons
- Coordinate with the Soquel-Aptos basin

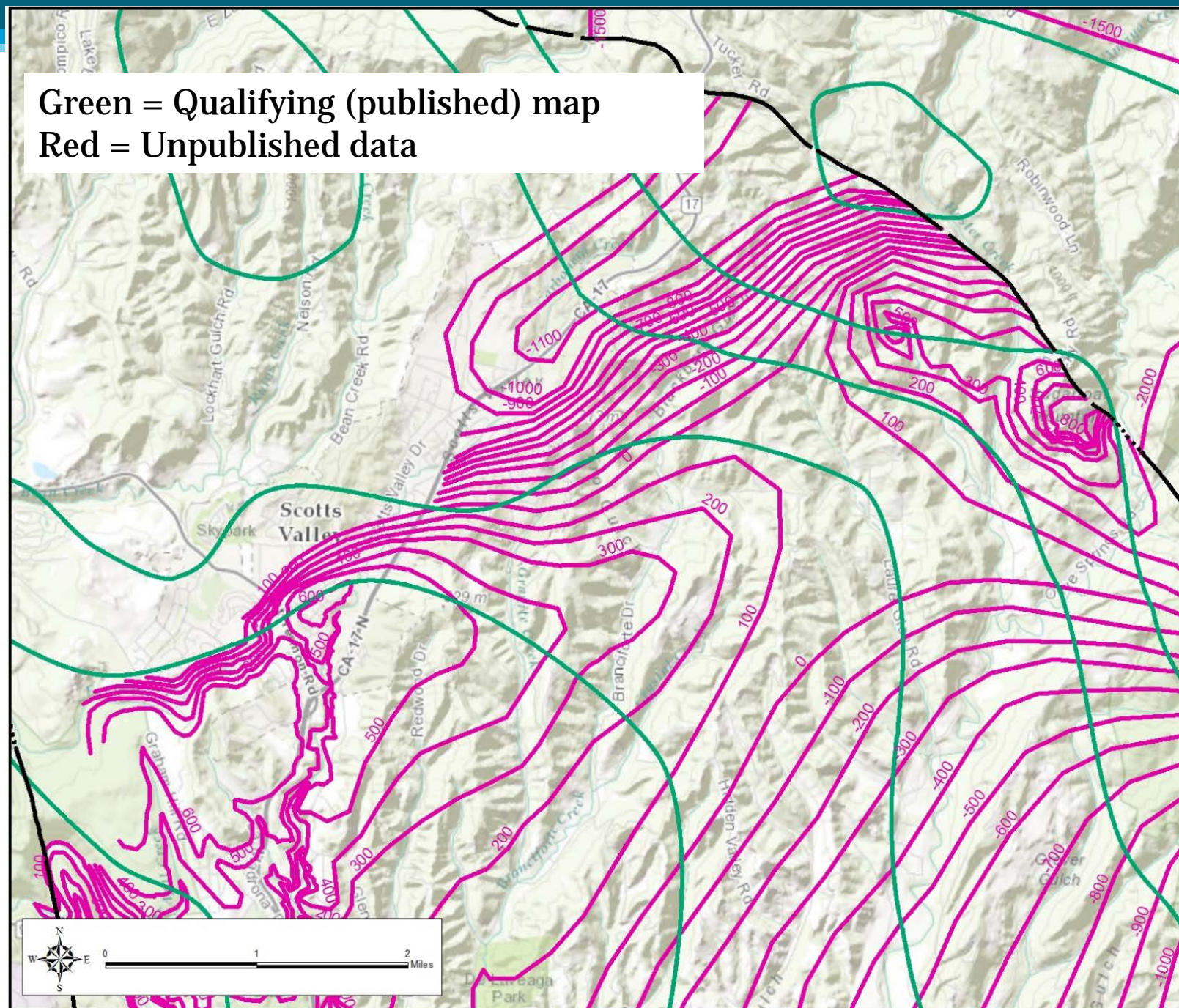
Scientific Modification

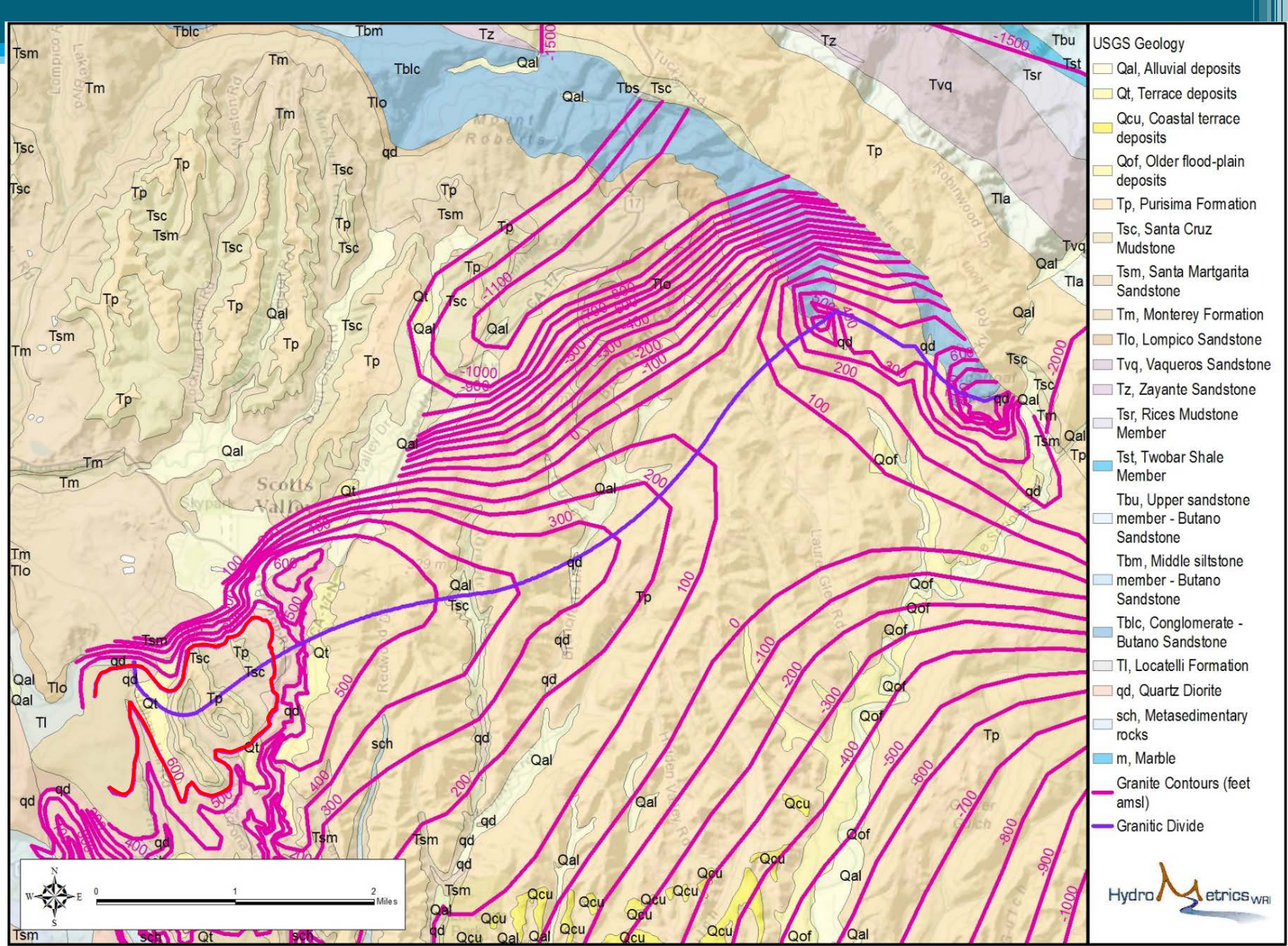
(External Boundaries)



Green = Qualifying (published) map
Red = Unpublished data

- Gravity
- Granite Contours (feet amsl)
- USGS Faults
 - fault, certain
 - fault, approximately located
 - ... fault, concealed

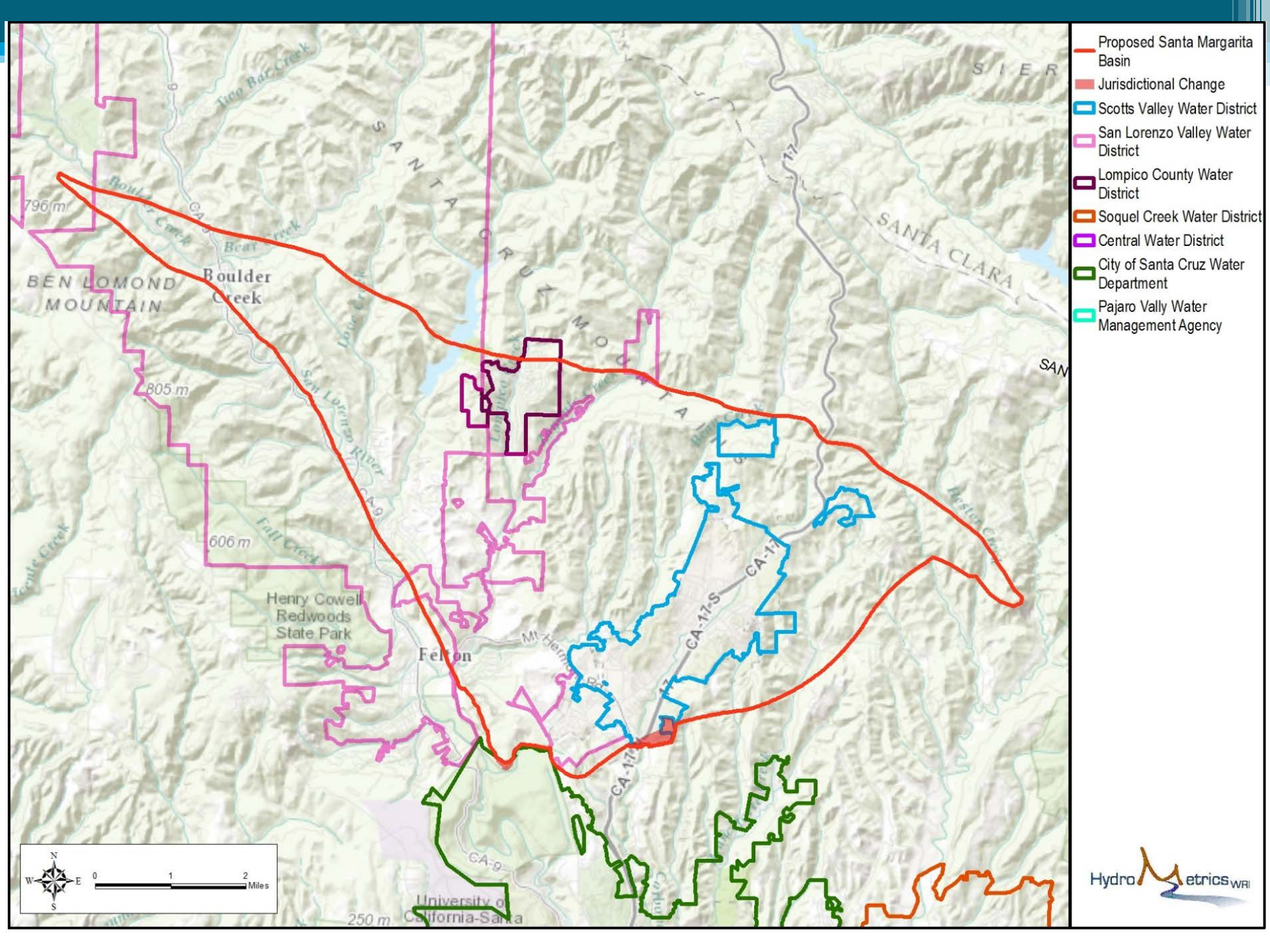




Jurisdictional Modification

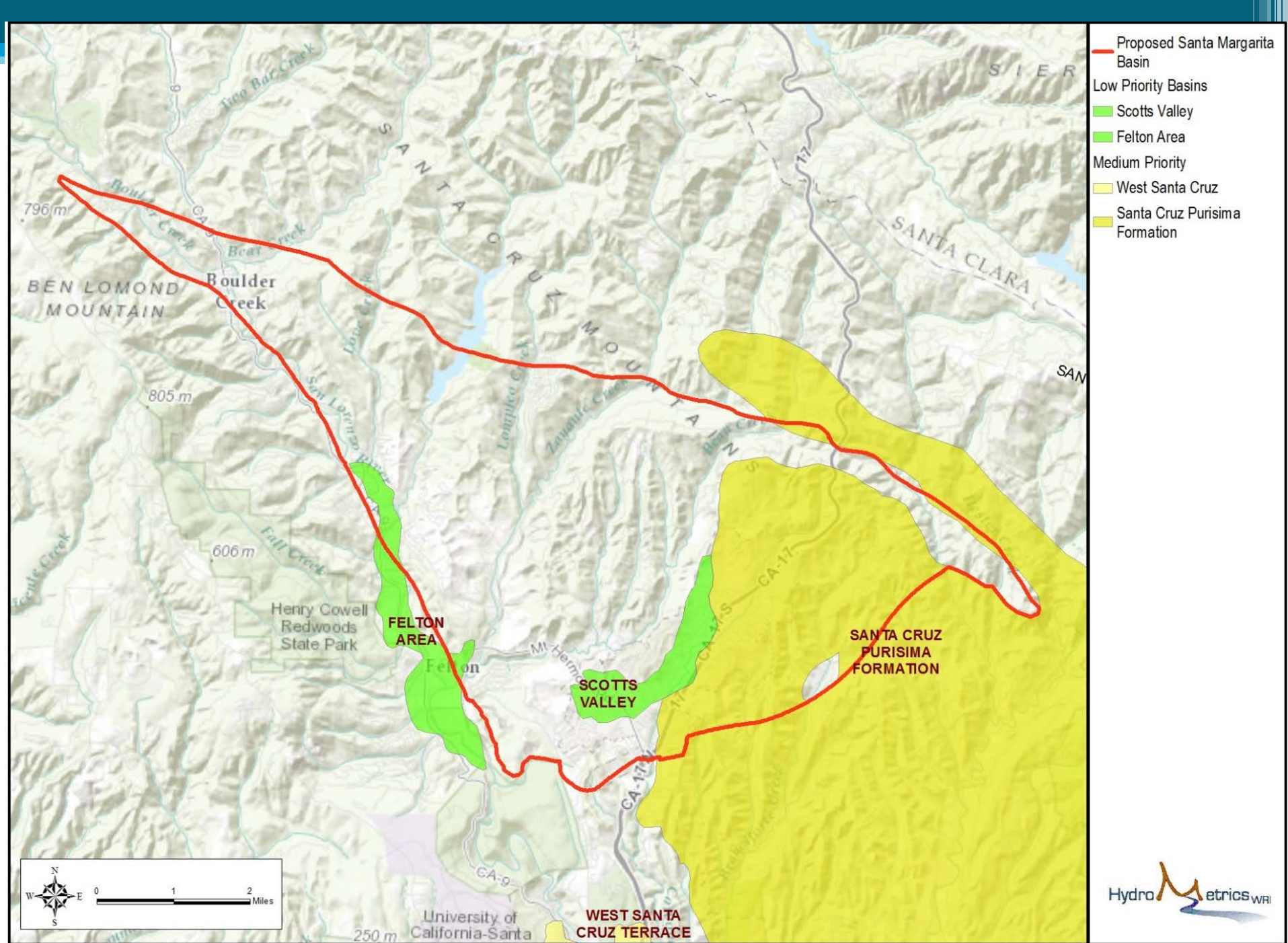
(Internal Boundaries)

(Other Boundary Modification?)



Issues

- Coordination with Soquel-Aptos Basin
 - One or two submittals
- Basin name
- Report outline
 - Scientific justification establishes basin
 - Jurisdictional justification makes minor adjustments
- Felton Area Basin to remain as a smaller basin



DWR Feedback/Questions