



# WATER MANAGEMENT IN AN UNCERTAIN FUTURE

Erik Ekdahl

Division of Water Rights

State Water Resources Control Board

# Overview



**Water  
Supply  
Uncertainty**

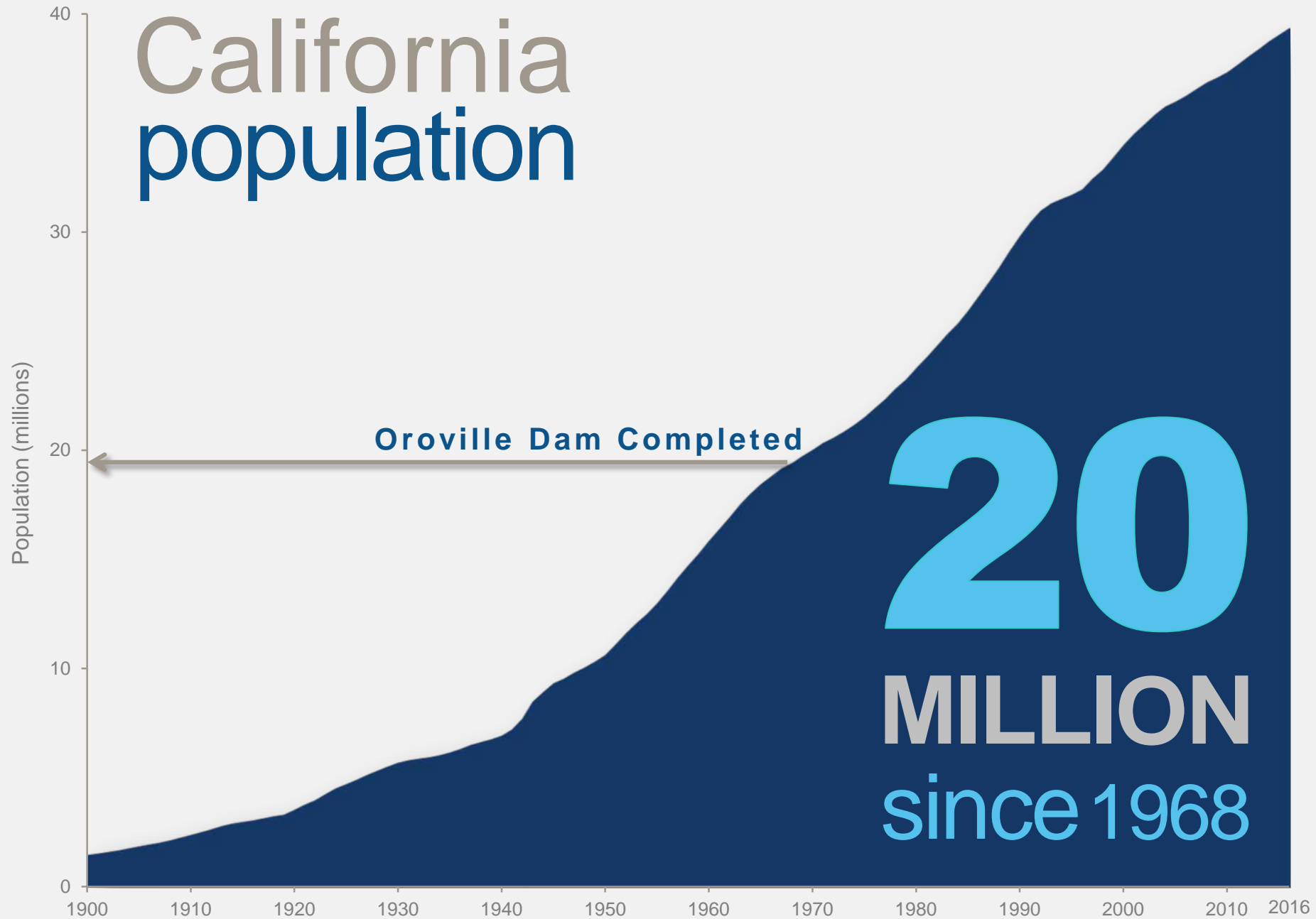


**Water Rights  
&  
Groundwater**



**Value-Based  
Management  
Options**

# California population

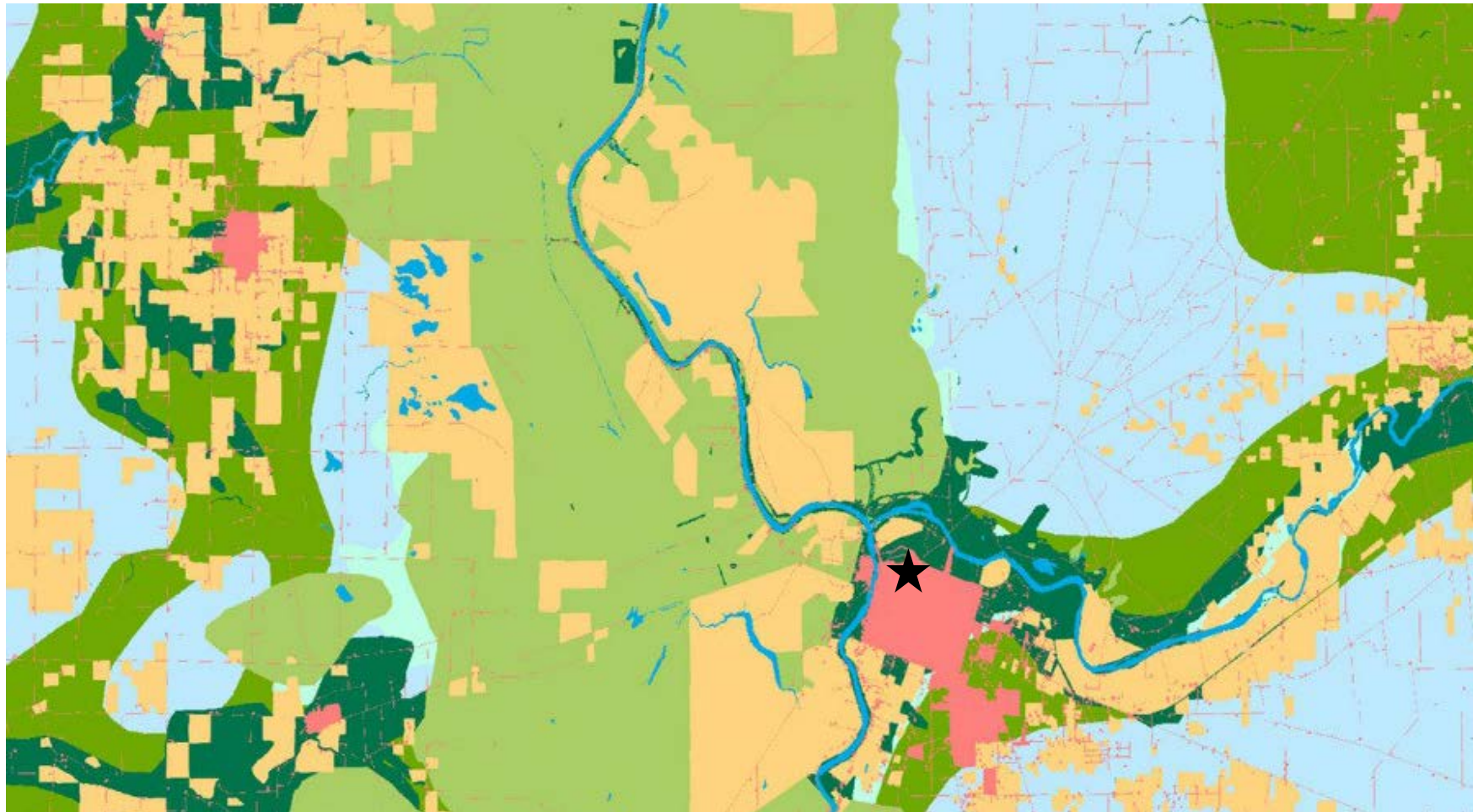


Source: California Department of Finance estimates

# 1920



## Sacramento LAND USE

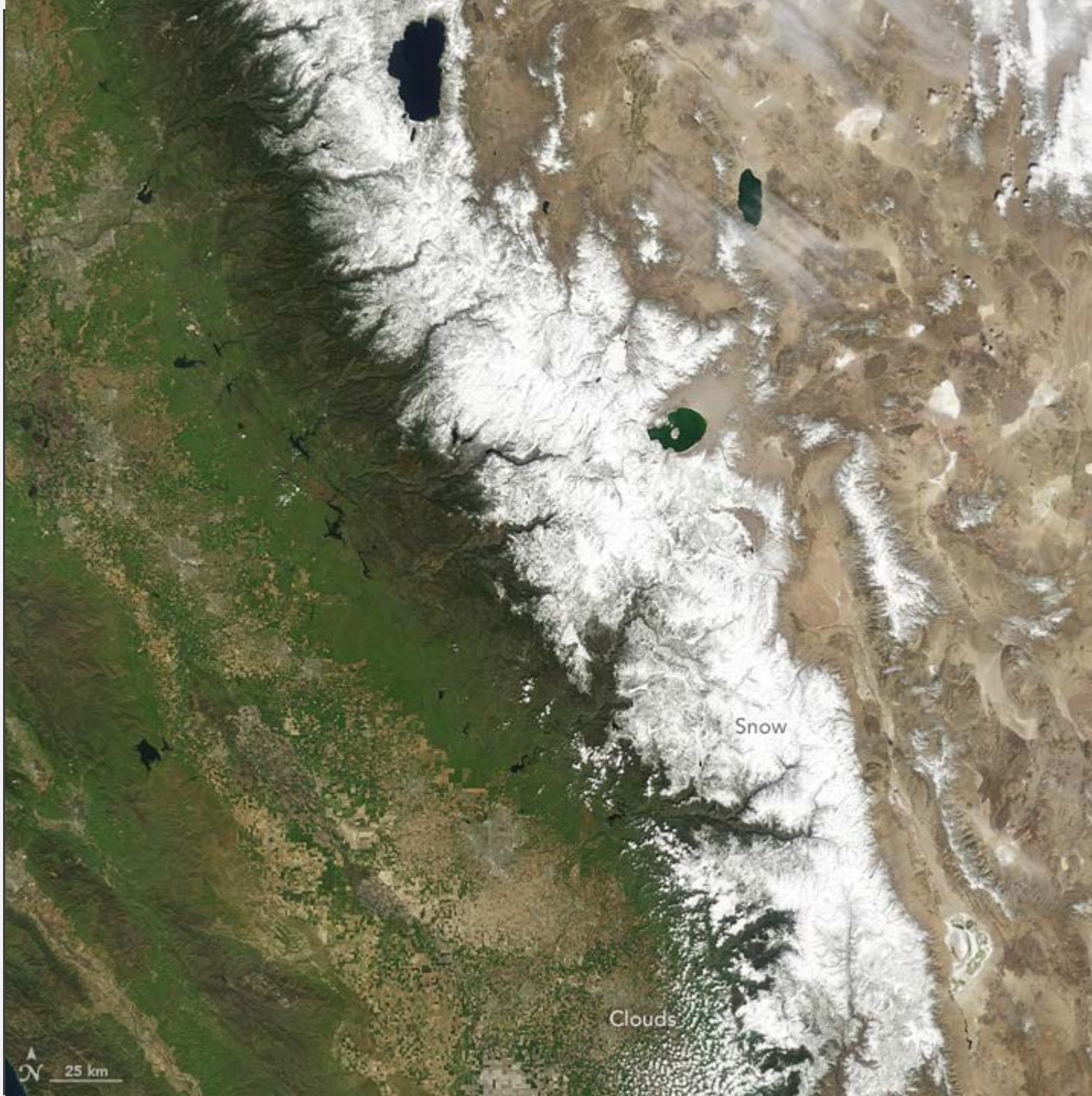


Urban Agriculture Grass/Shrub Forest Riparian Water Floodplain Wetland

Source: The Grinnell Resurvey Project, Museum of Vertebrate Zoology, UC Berkeley



# Climate



Sierra Nevada  
Snow Pack

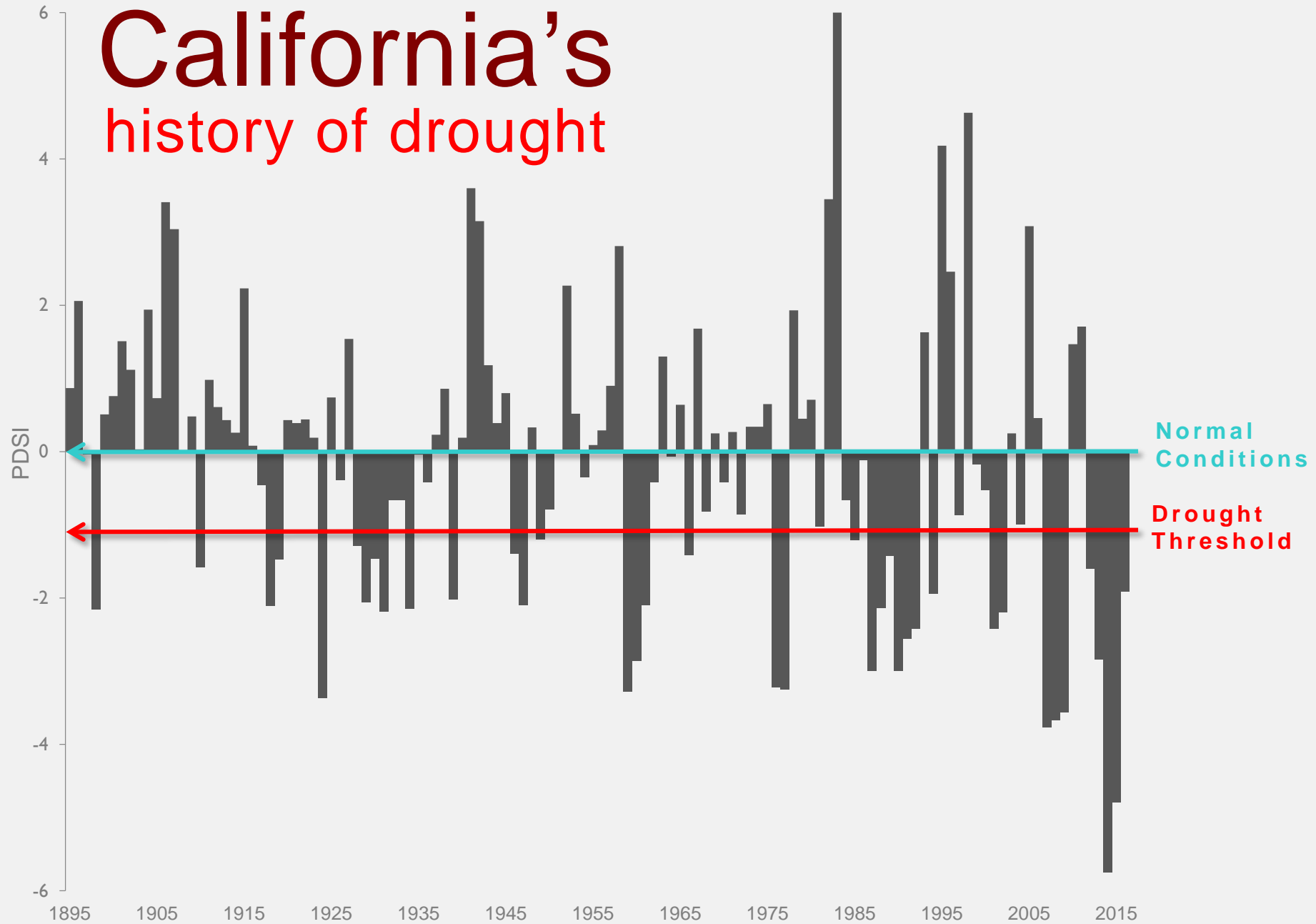
**Spring 2010**  
Average year

**Spring 2014**  
34% of average

**Spring 2015**  
5% of average

Source:  
NASA Earth Observatory

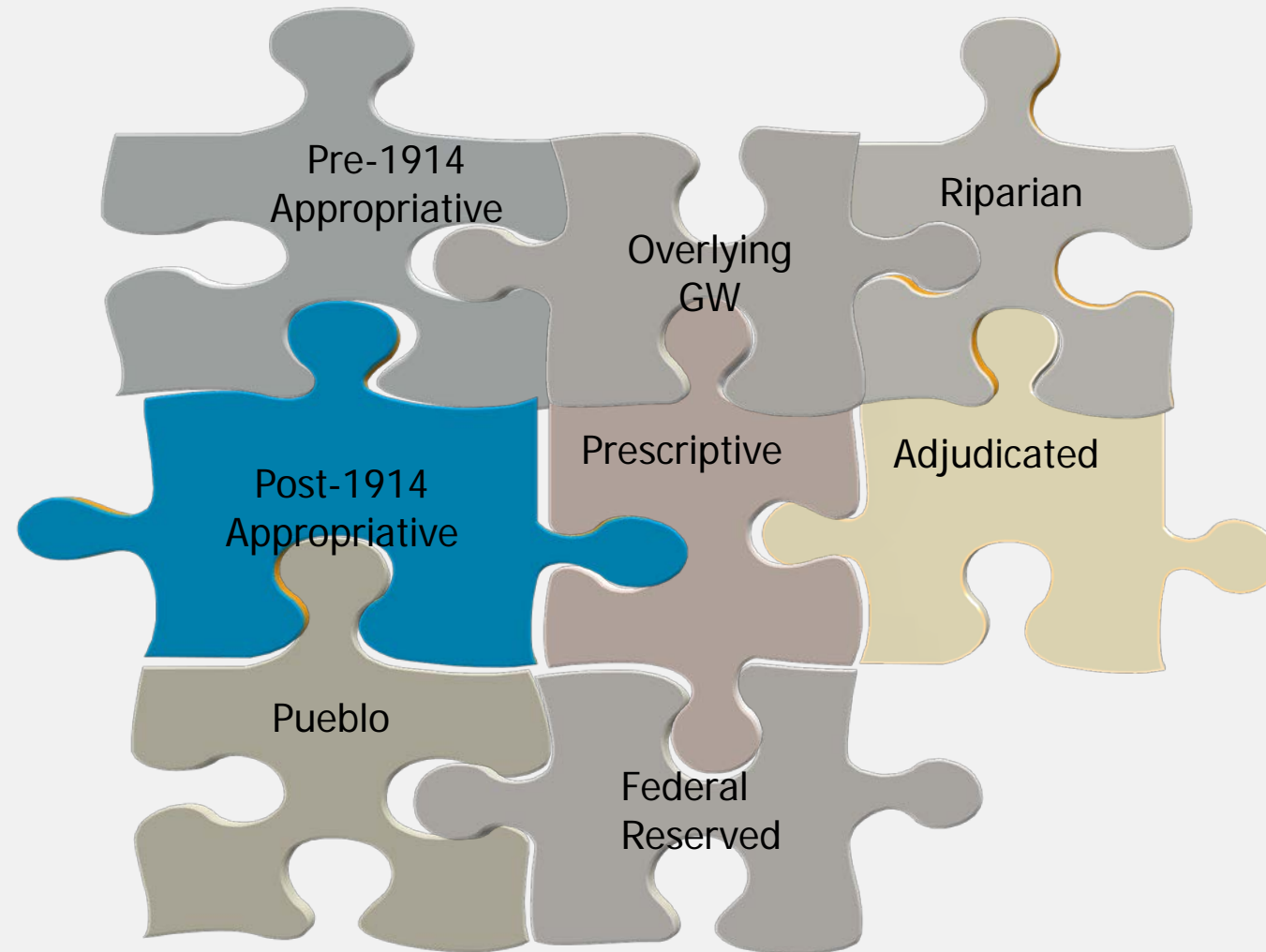
# California's history of drought



Source: NOAA

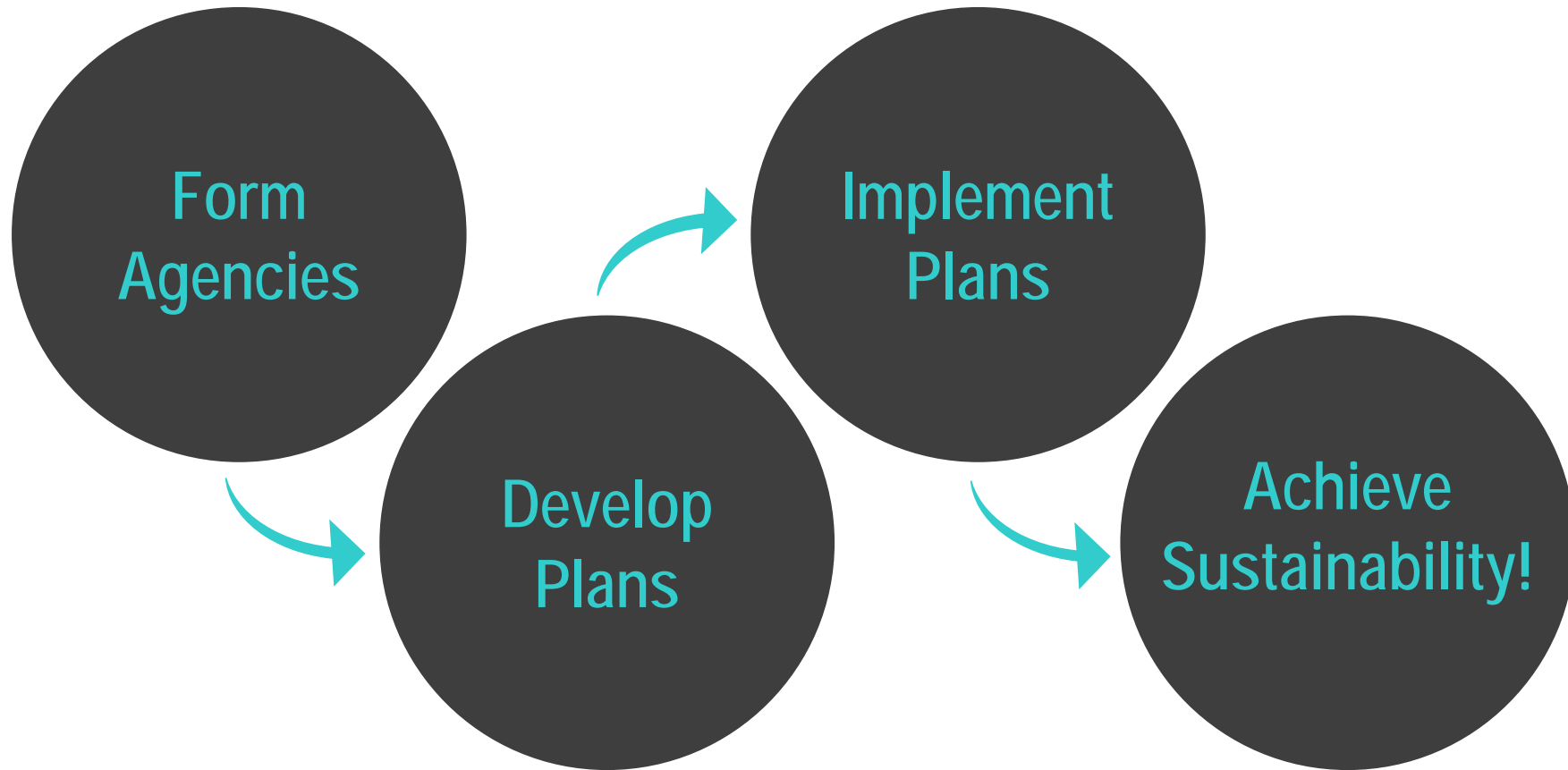
## WATER RIGHTS LAW 101

- Water belongs to the people of the State
- A water right is a “usufruct”
- Beneficial use of water shall be maximized
- Water shall be conserved
- Water use must be reasonable





# SGMA



# SGMA & The Public Trust

Depletions of interconnected surface water that have significant and unreasonable adverse impacts on beneficial uses of the surface water.



**Develop GSP**



**Evaluate GSP**



**State Intervention**

# Solutions



Project Funding



Land Use Changes



Pumping Restrictions

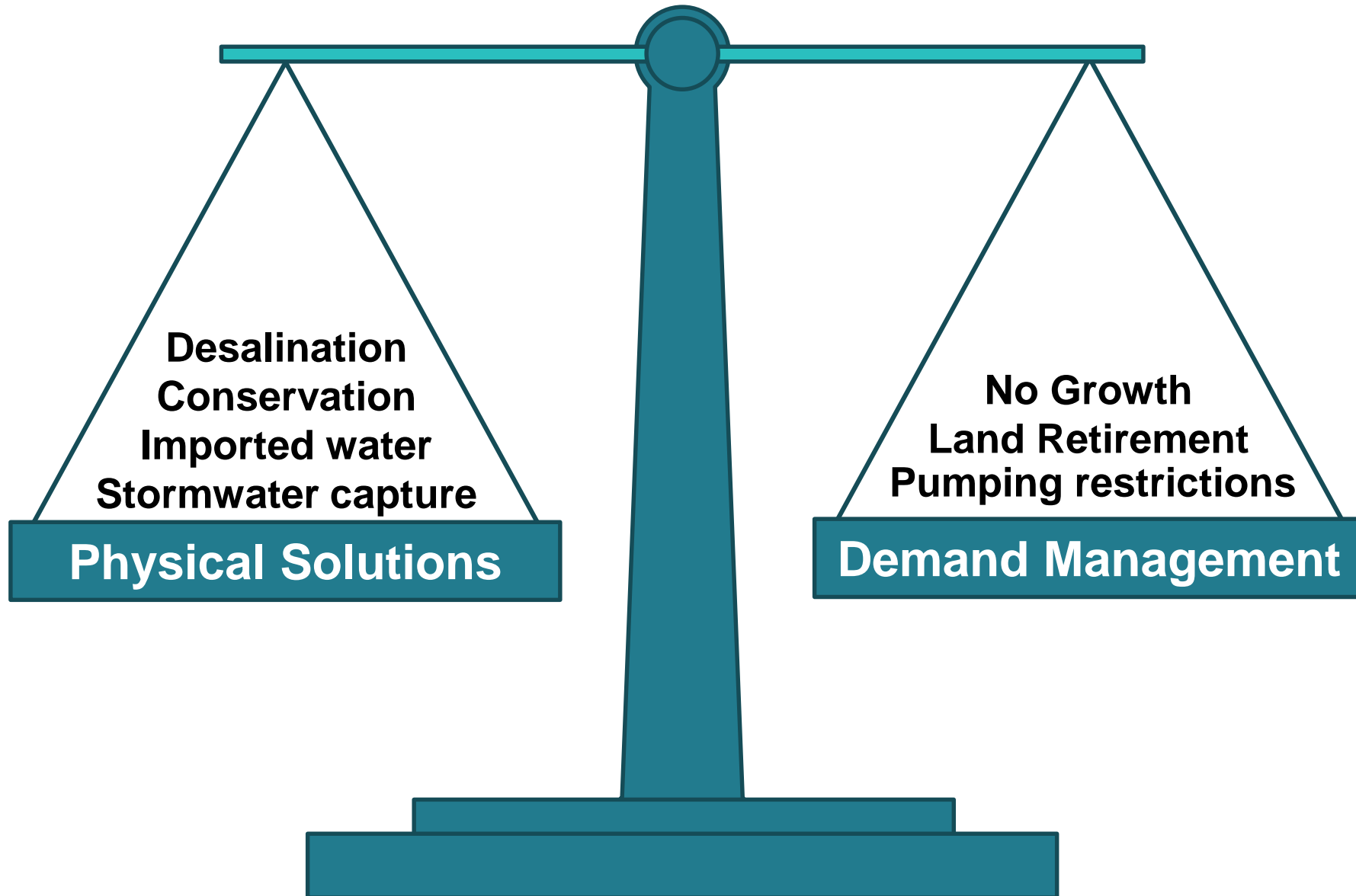


Better Data



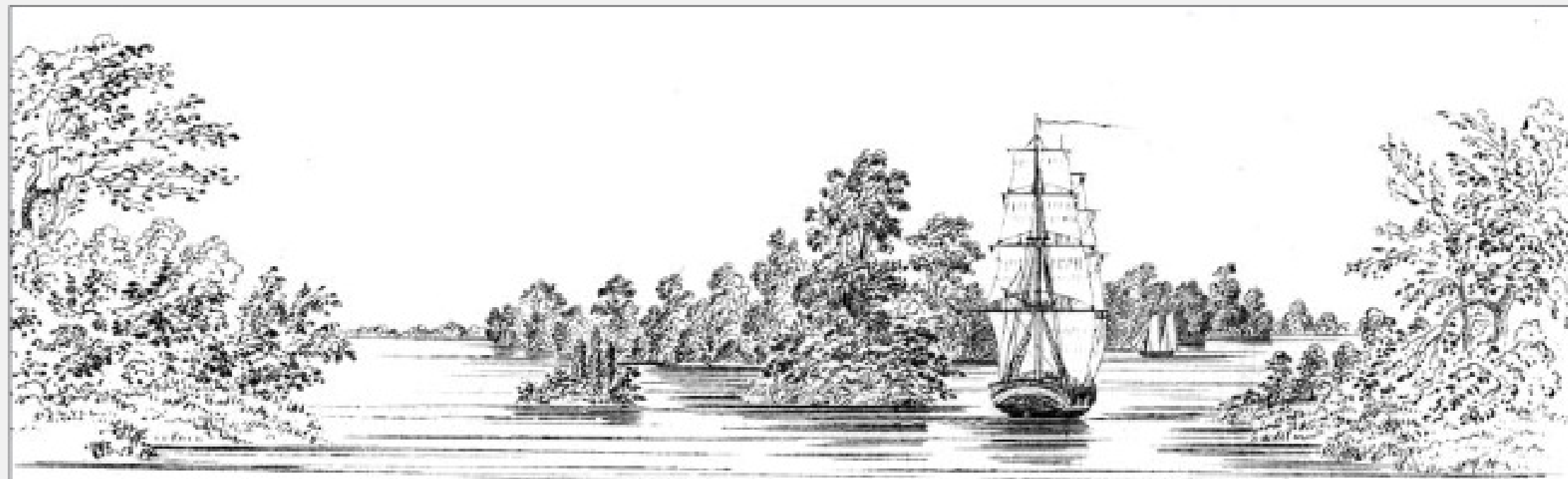
New Water

# Balancing the Basin









# Residential Water Use 2014-2019

