

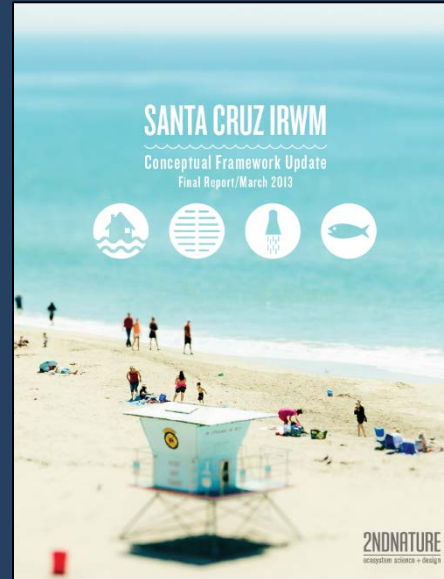
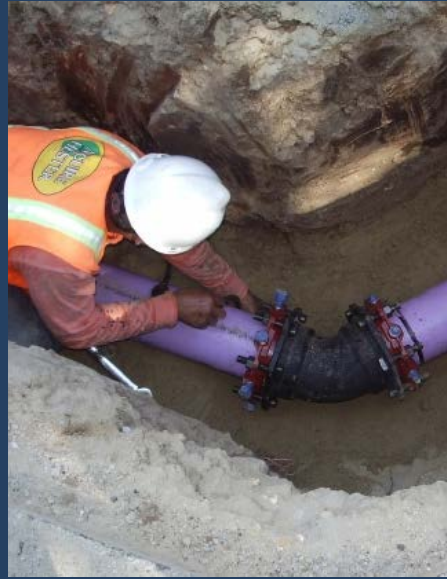
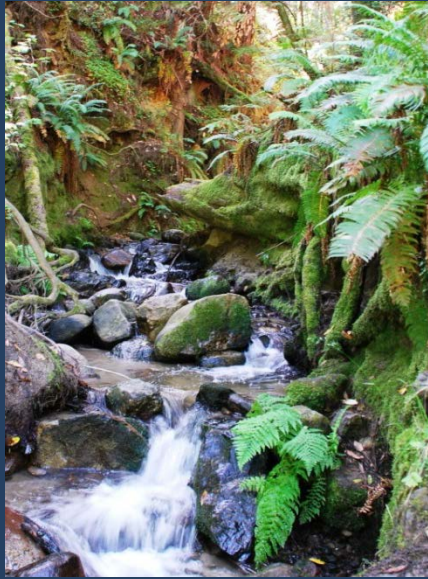


# Santa Cruz Integrated Regional Water Management

***Santa Margarita Groundwater Agency***

***March 9, 2019***

Tim Carson, Program Director  
Regional Water Management Foundation



## TOPICS

- Integrated Regional Water Management (IRWM) Program Overview
- Technical studies and projects completed

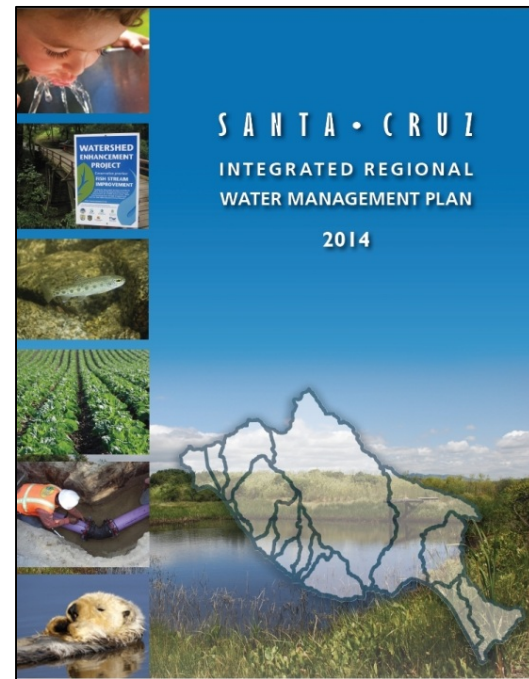
# IRWM Overview

What is IRWM?

Who is involved?

Issues covered?

Funding?



- Regional
- Comprehensive
- Collaborative
- Voluntary
- Multi-jurisdictional
- Emphasis on multi-benefit projects

# IRWM Overview

What is IRWM?

Who is involved?

Issues covered?

Funding?





# IRWM Overview

What is IRWM?

Who is involved?

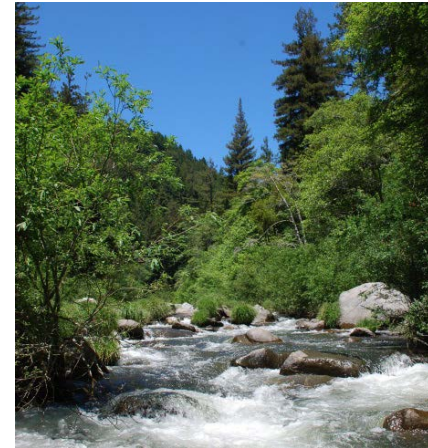
Issues covered?

Funding?

## Water Supply



## Water Quality



## Flood & Stormwater Management



## Watershed Enhancement & Habitat Restoration



# IRWM Overview

What is IRWM?

Who is involved?

Issues covered?

**Funding?**

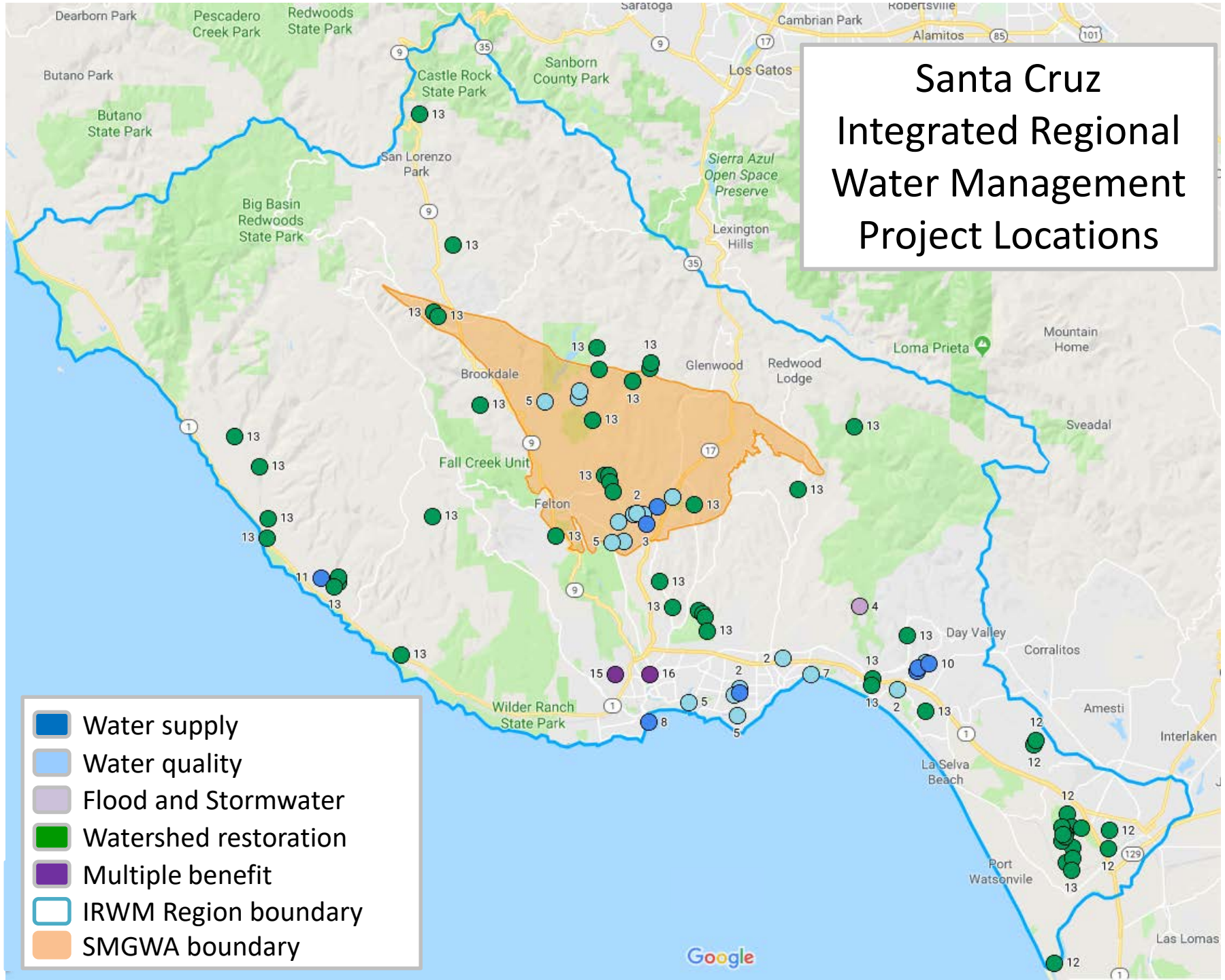
Propositions 50, 84, 1

Local agency funds



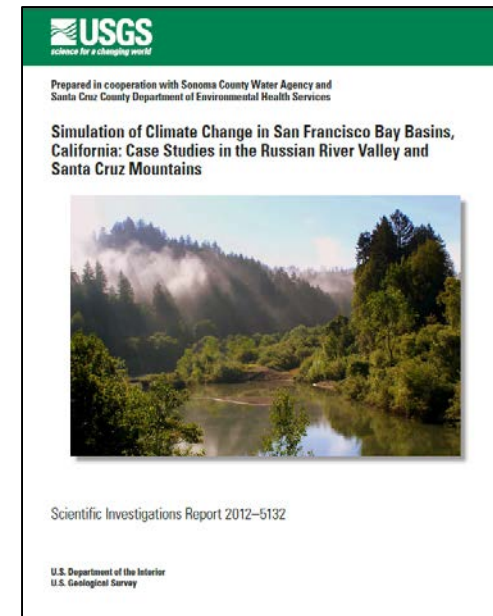
# Santa Cruz Integrated Regional Water Management Project Locations

- Water supply
- Water quality
- Flood and Stormwater
- Watershed restoration
- Multiple benefit
- IRWM Region boundary
- SMGWA boundary



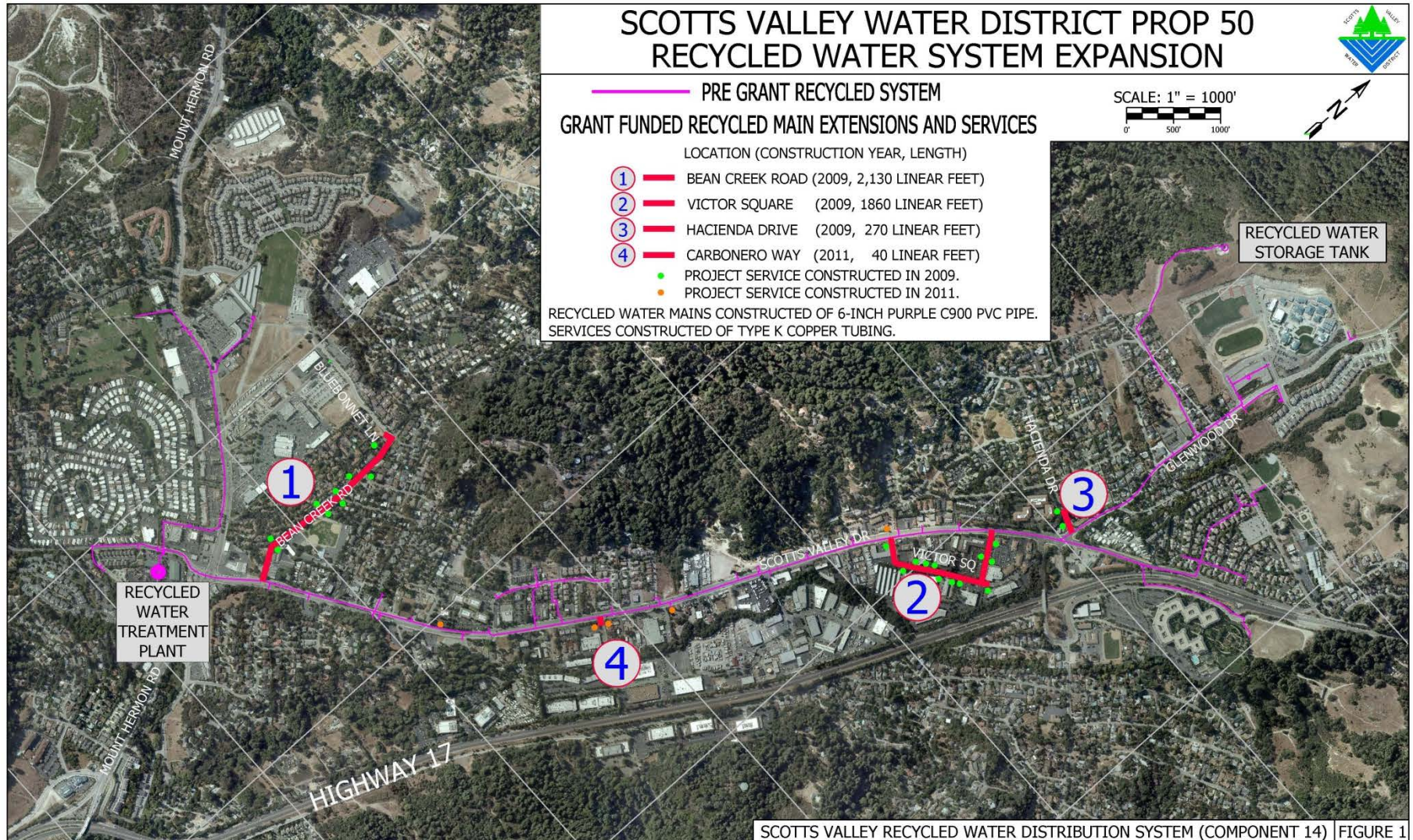
# Technical Studies

- Groundwater & Surface Water Management
  - CU & Enhanced Aquifer Recharge (2012)
  - CU & Water Transfers (2014)
- Simulation of Climate Change Scenarios:  
Case Study in the Santa Cruz Mountains  
U.S. Geological Survey (2012)
- Santa Margarita Basin  
Groundwater Model Update (2014)





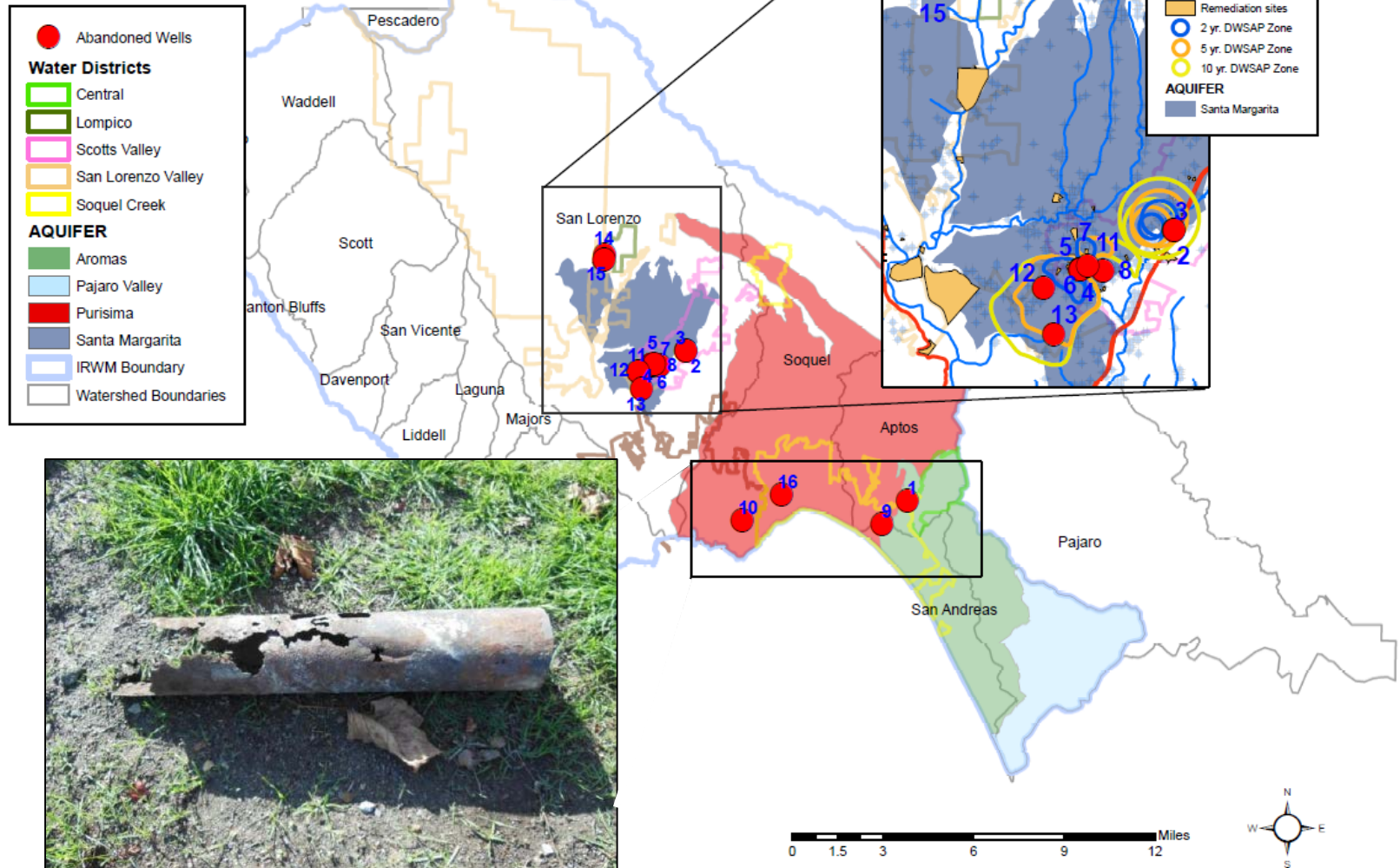
# Scotts Valley Recycled Water System Expansion





# Abandoned Well Destruction Program

## Santa Cruz County Abandoned Well Destruction Program



# Watershed Restoration

- Resource Conservation District Santa Cruz County
- Integrated Watershed Restoration Program, Phase 2 (implementation)
- 57 water quality and/or habitat restoration projects
- Watershed education program
- Partners In Restoration (PIR) permit coordination program



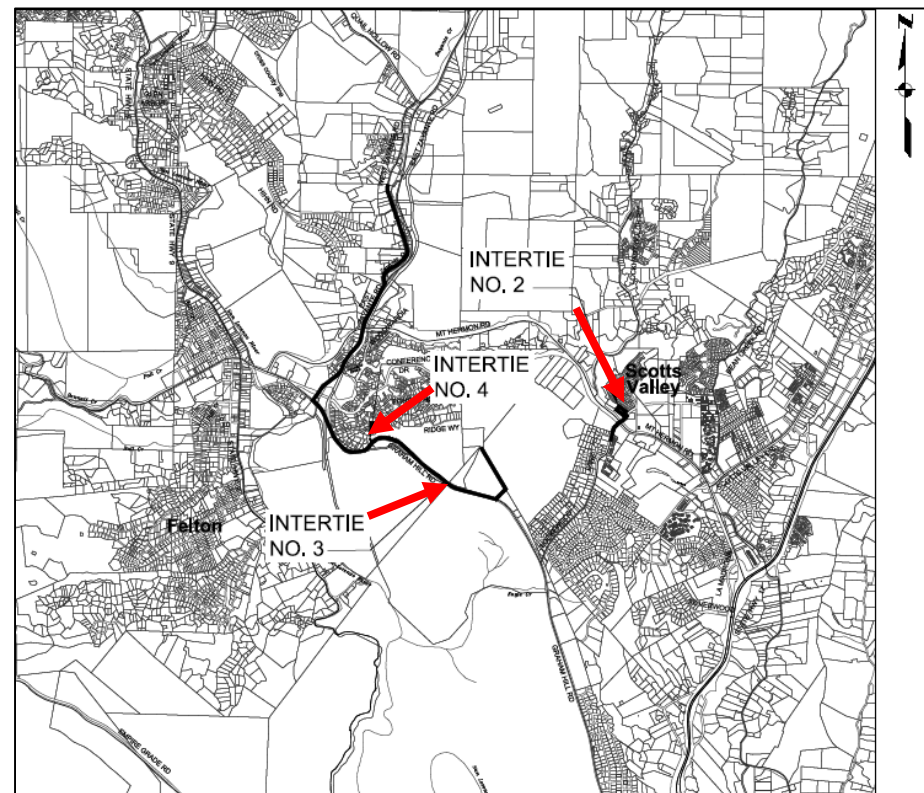
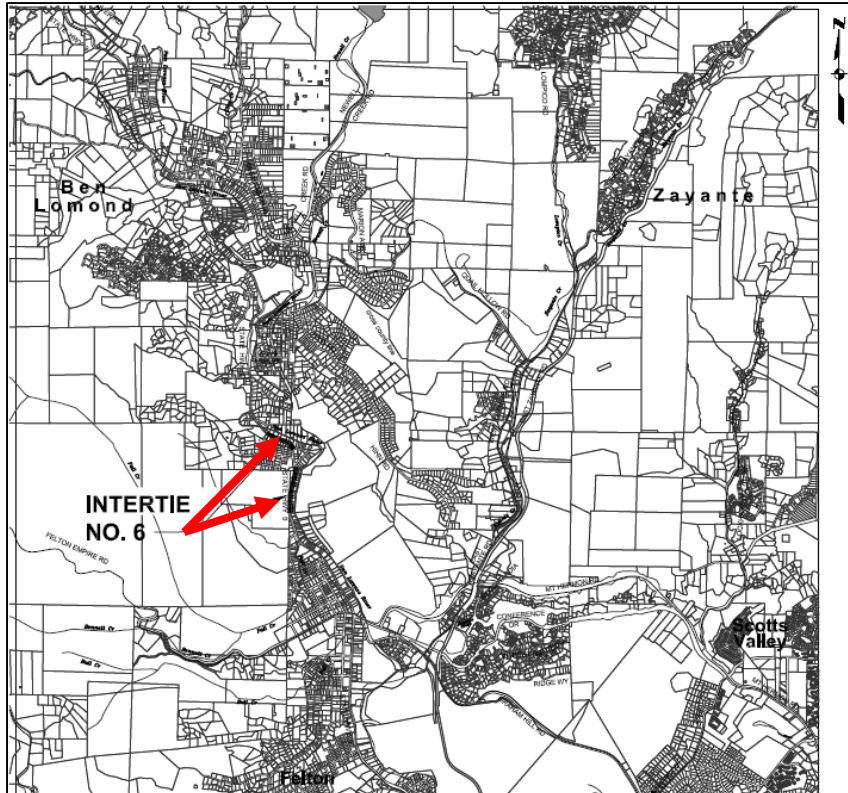


# Water System Emergency Interties

## Emergency Interties 2, 3, 4 and 6

**San Lorenzo Valley District & Scotts Valley Water District**

**Funded by: California Department of Public Health (Prop 50)**





# Stormwater Mgmt., LID, Aquifer Recharge

## TURNING RUNOFF INTO A RESOURCE



Low Impact Development  
Demonstration Projects in Santa Cruz County

## Calming the Storm

### Strategies and Tools for Easing the Stormwater Design and Permitting Process

New insights and design solutions from local professionals  
Benefits of taking Low Impact Development (LID) designs  
Lessons from the planning desk: getting to know agency staff  
Learn by example: local LID projects that meet the new post-construction requirements

Thursday, June 25, 2015  
8:30 AM to 4:30 PM  
Watsonville City Hall



Photographs courtesy of local professionals. All images are the property of the presenter. All images are the property of the presenter.

#### WHO SHOULD ATTEND

Architects and Engineers

Landscape Professionals

Local Agency Staff

Stormwater Professionals

Property Managers and Owners

Land Use Planners and Developers

Contractors and Construction Managers

#### PRESENTATION TOPICS

Lessons Learned from the Field

Local Design Requirements

Site Soil Testing Methodologies

Case Studies and Local Projects

"Passive" Landscapes for Permits

Uses for Various Stormwater Calculators

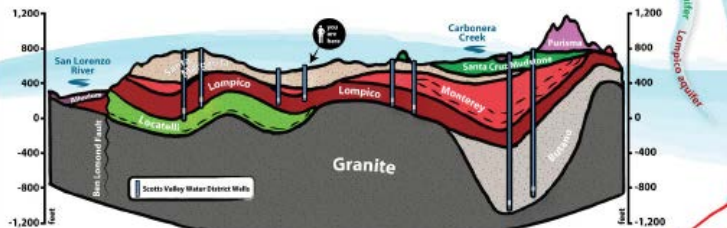
Preventing Rain Catchment for Indoor Uses

Cost is \$15 and includes light breakfast and lunch. Please register at  
www.santa CruzCounty.org/Stormwater/CalmingtheStorm



## Our Water Comes From the Ground

You are standing in the Santa Margarita Groundwater Basin which covers over 30 square miles and runs northwest to Boulder Creek, southwest to Felton and east to Scotts Valley. The basin contains multiple **aquifers**—underground layers of rock and sand that are filled with water—with names like Lompico, Butano, and Locatelli.



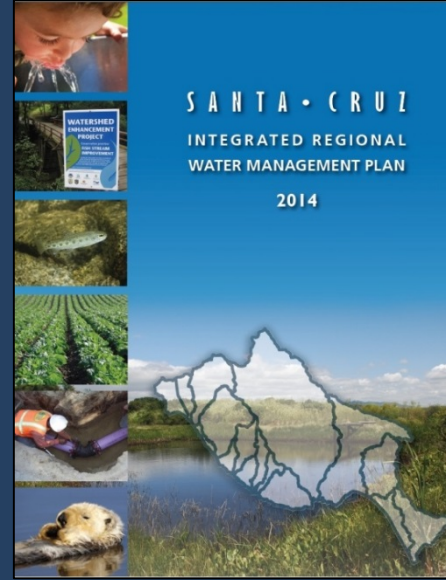
### Aquifers in the Santa Margarita Groundwater Basin

The San Lorenzo and Scotts Valley Water Districts get their drinking water from aquifers in the basin. Groundwater from the basin also seeps into streams and creeks and provides habitat for plants, fish and other animals during the summer.

# Summary

- IRWM has enhanced collaboration and strengthened partnerships amongst local agencies
- Leveraged state and local funding to enable implementation of high priority projects
- Findings and outcomes are benefiting ongoing planning efforts in the region





# Thank you

For more information visit:

[www.SantaCruzIRWMP.org](http://www.SantaCruzIRWMP.org)

[www.RWMPF.org](http://www.RWMPF.org)